

AV

Welcome to...

Van Domburg Partners

In this issue...

VAN DOMBURG PARTNERS

Introducing Van Domburg Partners	3
Midwich Group	4

LARGE FORMAT DISPLAYS

Large Format Displays	6
Interactive displays	14

HIGH END DISPLAYS, LED & IMAGE PROCESSING

LED	19
Videowall&ImageProcessing	23

PROJECTION

Projection	24
------------	----

SMALL FORMAT DISPLAYS

Small Format Displays	27
-----------------------	----

COMMERCIAL & CONSUMER TVs

Commercial	30
Consumer TV's	32

AV SOLUTIONS

Video distribution	35
Signage & IPTV	36
Video Conferencing	37
Room Booking	39
Wireless Collaboration	41
Professional Audio Solutions	42

MOUNTS & ACCESSORIES

Mounts	48
Cables	54
Projector Screens	55

Meet our Sales team



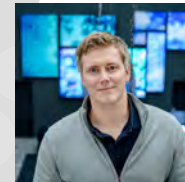
David van Soest
Account Manager
david@vandomburg.nu



Enzo Cantini
Account Manager
enzocantini@vandomburg.nu



Laurens de Baere
Account Manager
laurensdebaere@vandomburg.be



Ricardo van Domburg
Technical Sales
ricardo@vandomburg.nu



Ferry Neervoort
Technical Sales
ferryneervoort@vandomburg.nu



Bob van Holland
Internal Sales
bobvanholland@vandomburg.nu



Arjan van der Graaff
Internal Sales
arjanvandergraaff@vandomburg.nu



Simone Oorschot
Business Support
simone@vandomburg.nu



Eloisa Gerritse
Business Support
eloisagerritse@vandomburg.nu

Introducing

Van Domburg Partners

Van Domburg Partners is the largest distributor in the Benelux for professional displays and audiovisual solutions for Samsung, NEC, Dynacan, AMX by Harman and SMART, amongst others, for the B2B market. We not only offer the products, but also our knowledge and experience to make your project successful. We think along and look for a creative and original solution. Our personal touch is our strength.

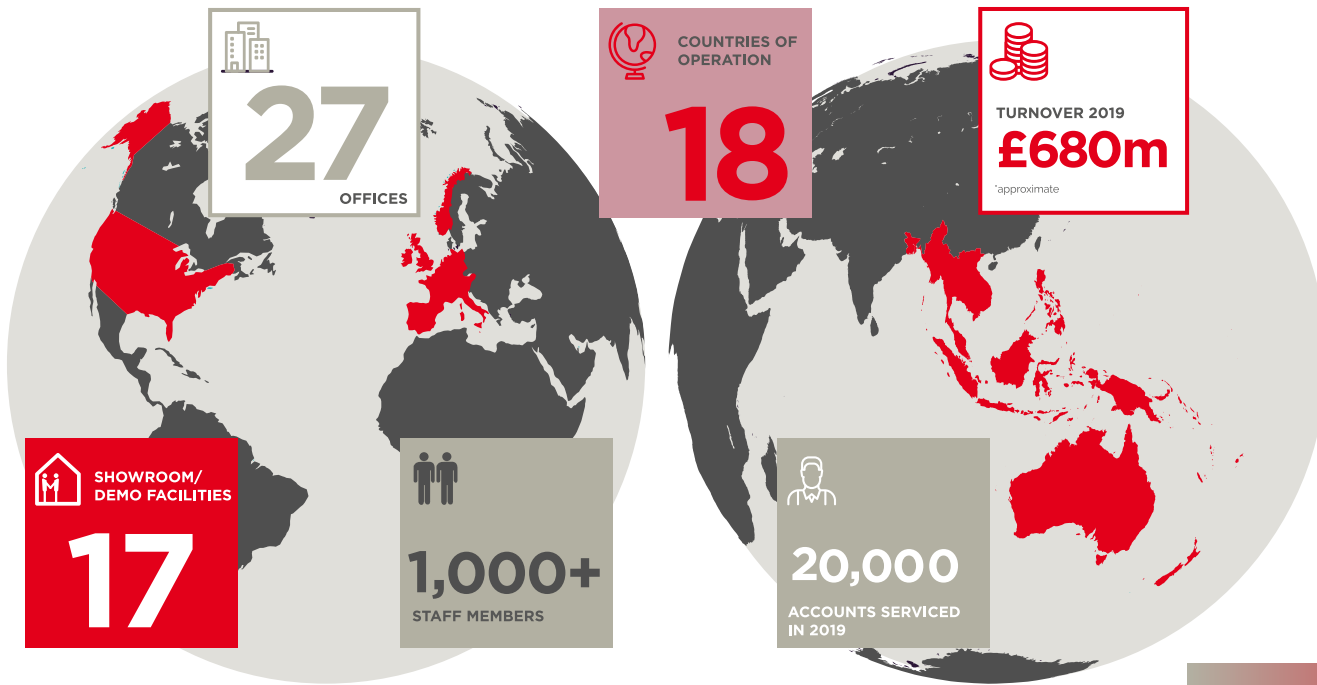
Van Domburg Partners is part of the Midwich group, a specialist distributor for audiovisual and document management solutions, since September 2017. Midwich has 13 offices in the UK, Germany, France, Australasia, Spain, Portugal and The Netherlands. Midwich has an extensive portfolio of over 300 suppliers and maintains longterm relationships with more than 10.000 resellers. The Midwich Group is registered at the AIM (Alternative, Investment Market) London Stock Exchange.


Van Domburg Partners offers via more than 700 connected partners solutions for Digital Signage, Collaboration & videoconferencing, LED, Outdoor & High Brightness, Videowall, Education, Retail and Hospitality & Events.

We have large expert knowledge and through years of intense collaboration with our partners we have a lot of experience with (large) projects that involve audiovisual equipment. You can trust in us to give you expert advice, always with a personal touch.

Call +31(0) 180 745 888
visit www.vandomburg.nu





 Come and see our renewed Experience Rooms in Ridderkerk

Midwich International AV Distribution Specialist

Group Plc

The rapid growth of the Midwich Group in UK&I has led to the expansion of our specialist knowledge. The Midwich Group partners companies provide a range of specialist expertise ranging from media production to professional audio and lighting. Discuss with your account manager how you can take full advantage of the solutions and knowledge we can supply.



Specialist AV distributor for the Benelux





Large Format Displays

High End Displays

Projection

Small Format Displays

Commercial & Consumer TV

AV Solutions

Mounts & Accessories

Introducing Large Format Displays

Over the next four years, it is predicted that the market for large format displays will grow by almost 8%¹. One of the key drivers for this is the continual innovation in LFD technology. We're seeing the rapid adoption of features that allows LFDs to offer better flexibility, stability and sustainability. Especially in digital signage, high bright 4K and environment resistant qualities are a focus.

Another key trend we have continued to witness is the growth in interactive displays. Over the past year, we have witnessed a continual increase of 3.94% in interactive displays sold² in the education sector. However, the desire for interactivity is quickly expanding to not just classrooms but to meeting rooms and digital signage as well³.

As videowall technology becomes more accessible, the market for these continue to grow; we've witnessed an increase in demand by 3.76%². As well as becoming more accessible, videowall technology advancements have contributed to the uptake of these products. With a crisper, near-seamless image, as well as touch screen capabilities and field communications on the horizon⁴, videowall popularity is set to only increase as 2020 progresses.

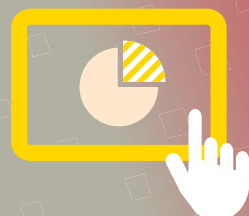
Overall Van Domburg Partners has witnessed a 12.65% increase in the number of large format displays sold² as they become more prevalent in areas such as museums, academic buildings, train stations and even banks.



12.65%
increase of LFD
units sold



3.76%
increase in videowall
orders²



3.94%
increase in Interactive
LFDs sold to the
education sector²

¹ <https://www.businesswire.com/news/home/20200302005610/en/Commercial-Large-Format-Display-Signage-Market-2020-2024>

² Based on Van Domburg Partners sales from April 2019 to March 2020 compared to April 2018 to March 2019. Data taken 6.3.20, exclusions & omissions exempt.

³ <https://www.sharp.co.uk/cps/rde/achg/gb/hsxsl/html/digital-signage-and-interactive-display-trends-2020-ai-and-dsaas.htm>

⁴ <https://www.marketwatch.com/press-release/video-wall-market-growing-demand-and-trends-2019-b-2028-2019-03-15>



Samsung Retail Display Solutions

Reinventing the shopping experience through state-of-the-art technology

SMART Signage | LED Signage | MagicINFO Solution

Whichever market your customers operate in, they'll want to create a highly engaging and welcoming environment. Samsung's wide range of large format display products are designed to do just that. Incorporating quality components and Samsung expertise, their displays are sure to catch your customers' eyes.

SAMSUNG

Manufacturer Model No.	Model	Screen Size	Resolution	Brightness (nits)	Portrait	Usage	Bezel Size (mm)	HDMI	DVI	VGA	Display Port	RS-323	RJ-45	Removable logo	Wi-Fi	SOC Enabled	Internal Storage	Optional Media Player	Vesa Mount	Speakers
4K UHD Standard Signage																				
LH13QBRBGCX/EN	QB13R	13"	1920x1080	300	Yes	16/7	12.2 Even	1	0	0	0	1	1	No Logo	Yes	SSSP V6	8GB	N/A	100x100	Yes
LH13QBRBGCX/EN	QB13RT	13"	1920x1080	250	Yes	16/7	13.1 Even	1	0	0	0	1	1	No Logo	Yes	SSSP V6	8GB	N/A	100x100	Yes
LH43QBRBGCX/EN	QB43R	43"	3840x2160	350	Yes	16/7	9.2 (Top/Side) 11.2 (Bottom)	2	1	0	0	1	1	Yes	Yes	SSSP V6	8GB	N/A	200x200	Yes
LH49QBRBGCX/EN	QB49R	49"	3840x2160	350	Yes	16/7	9.2 (Top/Side) 11.2 (Bottom)	2	1	0	0	1	1	Yes	Yes	SSSP V6	8GB	N/A	200x200	Yes
LH55QBRBGCX/EN	QB55R	55"	3840x2160	350	Yes	16/7	9.2 (Top/Side) 11.2 (Bottom)	2	1	0	0	1	1	Yes	Yes	SSSP V6	8GB	N/A	200x200	Yes
LH65QBRBGCX/EN	QB65R	65"	3840x2160	350	Yes	16/7	11.5 (Top/Side) 12.5 (Bottom)	2	1	0	0	1	1	Yes	Yes	SSSP V6	8GB	N/A	400x400	Yes
LH75QBRBGCX/EN	QB57R	75"	3840x2160	350	Yes	16/7	11.5 (Top/Side) 12.5 (Bottom)	2	1	0	0	1	1	Yes	Yes	SSSP V6	8GB	N/A	600x400	Yes
LH82QERLGC/EN	QE82R	82"	3840x2160	350	Yes	16/7	10.8 (Top/Side) 10.9 (Bottom)	2	1	0	0	1	1	Yes	Yes	SSSP V7	8GB	N/A	600x400	Yes
LH98QBRBGCX/EN	QB98R	98"	3840x2160	350	Yes	24/7	15.2 (Top/Side/Bottom)	2	1	0	1	1	1	Yes	Yes	SSSP V6	8GB	N/A	900x600	Yes
4K UHD Premium Signage																				
LH32QMREBGCX/EN	QM32R	32"	1920x1080	400	Yes	24/7	9.9 Even	1	0	0	1	1	1	Yes	Yes	SSSP V6	8GB	N/A	200x200	Yes
LH43QMREBGCX/EN	QM43R	43"	3840x2160	500	Yes	24/7	9.2 (Top/Side) 11.2 (Bottom)	2	1	0	1	1	1	Yes	Yes	SSSP V6	8GB	N/A	200x200	Yes
LH49QMREBGCX/EN	QM49R	49"	3840x2160	500	Yes	24/7	9.2 (Top/Side) 11.2 (Bottom)	2	1	0	1	1	1	Yes	Yes	SSSP V6	8GB	N/A	200x200	Yes
LH55QMREBGCX/EN	QM55R	55"	3840x2160	500	Yes	24/7	9.2 (Top/Side) 11.2 (Bottom)	2	1	0	1	1	1	Yes	Yes	SSSP V6	8GB	N/A	400x400	Yes
LH65QMREBGCX/EN	QM65R	65"	3840x2160	500	Yes	24/7	9.2 (Top/Side) 11.2 (Bottom)	2	1	0	1	1	1	Yes	Yes	SSSP V6	8GB	N/A	400x400	Yes
LH75QMREBGCX/EN	QM75R	75"	3840x2160	500	Yes	24/7	11.5 (Top/Side) 12.5 (Bottom)	2	1	0	1	1	1	Yes	Yes	SSSP V6	8GB	N/A	400x400	Yes
LH85QMREBGCX/EN	QM85N	85"	3840x2160	500	Yes	24/7	13.2 (Top/Side) 13.3 (Bottom)	2	1	0	1	1	1	Yes	Yes	SSSP V6	8GB	N/A	600x400	Yes
LH98QMREBGCX/EN	QM98N	98"	3840x2160	500	Yes	24/7	15.2 (Top/Side/Bottom)	2	1	0	1	1	1	Yes	Yes	SSSP V6	8GB	N/A	900x600	Yes
4K UHD High Usage																				
LH43QHREBGCX/EN	QH43R	43"	3840x2160	700	Yes	24/7	9.2 (Top/Side) 11.2 (Bottom)	2	1	0	1	1	1	Yes	Yes	SSSP V6	8GB	N/A	200x200	Yes
LH49QHREBGCX/EN	QH49R	49"	3840x2160	700	Yes	24/7	9.2 (Top/Side) 11.2 (Bottom)	2	1	0	1	1	1	Yes	Yes	SSSP V6	8GB	N/A	200x200	Yes
LH55QHREBGCX/EN	QH55R	55"	3840x2160	700	Yes	24/7	9.2 (Top/Side) 11.2 (Bottom)	2	1	0	1	1	1	Yes	Yes	SSSP V6	8GB	N/A	200x200	Yes
LH65QHREBGCX/EN	QH65R	65"	3840x2160	700	Yes	24/7	9.2 (Top/Side) 11.2 (Bottom)	2	1	0	1	1	1	Yes	Yes	SSSP V6	8GB	N/A	400x400	Yes
LH75QHREBGCX/EN	QH75R	75"	3840x2160	700	Yes	24/7	11.5 (Top/Side) 12.5 (Bottom)	2	1	0	1	1	1	Yes	Yes	SSSP V6	8GB	N/A	400x400	Yes

Warranty: 3 years on site

Designed to perform in any room - small or large

The JBL Pro SoundBar PSB-1 is a cost-effective, commercial-grade active soundbar designed specifically for use in applications such as hotel guestrooms and cruise ship staterooms.



PSB-1

Clean, modern look for business environments

Experience brilliant image presentation with 700 nit brightness. Along with wide viewing angles, this ensures your content is visible to all.



VH55RR

Captivate audiences with excellent visibility

The OHF series has been specially designed to withstand outdoor conditions and temperatures ranging from -30°C to 50°C.



OH55F

Large Format Displays

High End Displays

Projection

Small Format Displays

Commercial & Consumer TV

AV Solutions

Mounts & Accessories

SAMSUNG

Whichever market your customers operate in, they'll want to create a highly engaging and welcoming environment. Samsung's wide range of large format display products are designed to do just that. Incorporating quality components and Samsung expertise, their displays are sure to catch your customers' eyes.

Manufacturer Model No.	Model	Screen Size	Resolution	Brightness CD/M	Portrait	Usage	Bezel Size (mm)	HDMI	DVI	VGA	Display F	RS-323	RJ-45	Removable	Wi-Fi	SOC Enable	Internal Stc	Optional M	Vesa Moun	Speakers
BK																				
LH82QPR8BGCXEN	QP82R	82"	7680x4320	500 (PEAK 4000)	Yes	16/7		4	0	0	0	1	1	Yes	Yes	SSSP V7	8GB	N/A	600x400	No
LH98QPR8BGCXEN	QP98R	98"	7680x4320	500 (PEAK 4000)	Yes	16/7		4	0	0	0	1	1	Yes	Yes	SSSP V7	8GB	N/A	600x400	No
Videowall																				
LH46UDEBLBB/EN	UD46EB	46"	1920x1080	500	Yes	24/7	2.3 (Top/Left) 1.2 (Right/Bott on	2	1	1	1	1	1	No Logo	No	No	No	SBB-SS08N	600x400	No
LH46UHFCLBB/EN	UH46FC	46"	1920x1080	700	Yes	24/7	3.0 (Top/Left) 2.0 (Right/Bottor	2	1	0	1	1	1	No Logo	No	No	No	SBB-SS08N	600x400	No
LH46UMNHLBB/EN	UM46NE	46"	1920x1080	500	Yes	24/7	1.15 (T op/Left) 0.55 (Right/Bott	2	1	1	1	1	1	No Logo	No	No	No	SBB-SS08N	600x400	No
LH46UHNHLBB/EN	UH46NE	46"	1920x1080	700	Yes	24/7	1.15 (T op/Left) 0.55 (Right/Bott	2	1	1	1	1	1	No Logo	No	No	No	SBB-SS08N	600x400	No
LH55UDEBLBB/EN	UD55EB	55"	1920x1080	500	Yes	24/7	2.3 (Top/Left) 1.2 (Right/Bott on	2	1	1	1	1	1	No Logo	No	No	No	SBB-SS08N	600x400	No
LH55UMHHLBB/EN	UM55HE	55"	1920x1080	500	Yes	24/7	1.15 (T op/Left) 0.55 (Right/Bott	2	1	1	1	1	1	No Logo	No	No	No	SBB-SS08N	600x400	No
LH55UHFHLBB/EN	UH55FE	55"	1920x1080	700	Yes	24/7	1.15 (T op/Left) 0.55 (Right/Bott	2	1	1	1	1	1	No Logo	No	No	No	SBB-SS08N	600x400	No
LH55VHRRBGBX/EN	VH55RR	55"	3840x2160	700	Yes	24/7	0.44 Even	2	1	0	1	1	1	No Logo	No	No	No	SBB-SS08N	600x400	No
High Brightness																				
LH32OMHPWBC/EN	OM32H	32"	1920x1080	1000	Yes	24/7	9.3 (Top) 7.8 (Left/Right) 6.5 (B	2	0	0	1	1	1/HDbase	Yes	Yes	SSSP V4	8GB	N/A	100x100	No
LH46OMNSLGB/EN	OM46N	46"	1920x1080	4000	Yes	24/7	19.9 Ev en	2	0	0	1	1	1	Yes	Yes	SSSP V6	8GB	N/A	400x400	No
LH46OMNDPGB/EN	OM46ND	46"	1920x1080	3000/1000	Yes	24/7	22.8 Even	2	0	0	0	1	1	Yes	Yes	SSSP V6	8GB	N/A	N/A	No
LH55OMNSLGB/EN	OM55N	55"	1920x1080	4000	Yes	24/7	19.9 Ev en	2	0	0	1	1	1	Yes	Yes	SSSP V6	8GB	N/A	400x400	No
LH55OMNDPGB/EN	OM55ND	55"	1920x1080	3000/1000	Yes	24/7	22.8 Even	2	0	0	0	1	1	Yes	Yes	SSSP V6	8GB	N/A	N/A	No
LH75OMREBGBX/EN	OM75R	75"	3840x2160	4000	Yes	24/7	23.9 Even	2	0	0	1	1	1	Yes	Yes	SSSP V7	8GB	N/A	900x600	Yes
Outdoor																				
LH46OHFPKBC/EN	OH46F	46"	1920x1080	2500	Yes	24/7	24.9 Even	2	0	0	0	1	1/HDbase	Yes	Yes	SSSP V4	8GB	N/A	955x500	No
LH55OHFPKBC/EN	OH55F	55"	1920x1080	2500	Yes	24/7	24.9 Even	2	0	0	0	1	1/HDbase	Yes	Yes	SSSP V4	8GB	N/A	1180x611	No
LH85OHNSLGB/EN	OH85ND	85"	3840x2160	3300	Yes	24/7	64.5 Even	2	0	0	1	1	1	Yes	No	SSSP V4	8GB	N/A	N/A	No
LH85OHNDKCB/EN	OH85ND	85"	3840x2160	3300	Yes	24/7	68.5 Even	4	0	0	2	1	1	Yes	No	SSSP V6	8GB	N/A	N/A	No
Specials																				
LH37SHREBGBX/EN	SH37R	37"	1920x540	700	Yes	44036	5.7 (Left/Right) 12 (T op/Bottom	1	1	0	1	1	1	Yes	Yes	Yes	8GB	SSB	400x200	Yes

Warranty: 3 years on site

Collab solutions

How can collaborative technology solutions improve your meeting rooms and huddle spaces?



SCAN ME!

Rich colour on a slim design

Engage audiences with an eye-catching 700 nit brightness, 4K picture quality and non-glare panels.



QH65R

Pairs well with...

Protect your display in unsupervised area's

The Vogel's Autolock® mechanism securely locks the display in place, and the slim design creates a clean, elegant look. The PFW 4700 is suitable for 55 to 80 inch displays weighing up to 75 kg.



PWF4700

Digital signage solutions are designed with a focus on a deep understanding of the industry and customer convenience. Integrated solutions ranging from content management, service to maintenance are delivered. The best content deserves the best display. With LG Digital Signage you choose impressive quality.

Warranty: 3 years on site

Manufacturer Model No.	Model	Screen Size	Resolution	Brightness (nits)	Portrait	Usage	Bezel Size (mm)	HDMI	DP	DVI	SOC Enabled	Warranty	Vesa Mount	Speakers
Commercial Lite														
28LT340CBZA.AEU	28LT340C	28"	1366 x 768	300 cd/m2	No			O(1), (1,3)	-	-	-	3Year	100x100mm	5W+5W, 2.0ch
32LT340CBZB.AEU	32LT340C	32"	1366 x 768	240 cd/m2	No			O(2), (1,4)	-	-	-	3Year	200x200mm	5W+5W, 2.0ch
Commercial Lite 4K Display														
43UT640SOZA.AEU	43UT640S	43"	3840 x 2160	300 cd/m2	No	16Hrs		O(3), (2,0)	-	-	-	3Year	200x200mm	10W+10W, 2.0ch
49UT640SOZA.AEU	49UT640S	49"	3840 x 2160	400 cd/m2	No	16Hrs		O(3), (2,0)	-	-	-	3Year	300x300mm	10W+10W, 2.0ch
55UT640SOZA.AEU	55UT640S	55"	3840 x 2160	400 cd/m2	No	16Hrs		O(3), (2,0)	-	-	-	3Year	300x300mm	10W+10W, 2.0ch
60UT640SOZB.AEU	60UT640S	60"	3840 x 2160	350 cd/m2	No	16Hrs		O(3), (2,0)	-	-	-	3Year	300x300mm	10W+10W, 2.0ch
65UT640SOZA.AEU	65UT640S	65"	3840 x 2160	400 cd/m2	No	16Hrs		O(3), (2,0)	-	-	-	3Year	300x300mm	10W+10W, 2.0ch
70UT640SOZA.AEU	70UT640S	70"	3840 x 2160	350 cd/m2	No	16Hrs		O(3), (2,0)	-	-	-	3Year	600x400mm	10W+10W, 2.0ch
75UT640SOZA.AEU	75UT640S	75"	3840 x 2160	350 cd/m2	No	16Hrs		O(3), (2,0)	-	-	-	3Year	600x400mm	10W+10W, 2.0ch
Basic LED / ingebouwde luidsprekers														
32SE3KE-BAEU	32SE3KE	32"	1920 x 1080	350 cd/m2	Yes	18Hrs		O(2), HDMI/2 : HDCP 1.4	X	O(1)	-	3Year		Internal
Semi pro WebOS LED / ingebouwde luidsprekers														
32SM5KE-BAEU	32SM5KE	32"	1920 x 1080	400 cd/m2	Yes	24Hrs		O(3)	O(1)	O(1)	-	3Year		Internal
Basic 4K Displays														
43UL3G-BAEU	43UL3G	43"	3840 x 2160	300 cd/m2	Yes	16Hrs		O(3), (2,0)	-	-	WebOS 4.1	3Year	200x200mm	Internal
50UL3G-BAEU	50UL3G	50"	3840 x 2160	350 cd/m2	Yes	16Hrs		O(3), (2,0)	-	-	WebOS 4.1	3Year	200x200mm	Internal
55UL3G-BAEU	55UL3G	55"	3840 x 2160	350 cd/m2	Yes	16Hrs		O(3), (2,0)	-	-	WebOS 4.1	3Year	300x300mm	Internal
65UL3G-BAEU	65UL3G	65"	3840 x 2160	350 cd/m2	Yes	16Hrs		O(3), (2,0)	-	-	WebOS 4.1	3Year	300x300mm	Internal
75UL3G-BAEU	75UL3G	75"	3840 x 2160	350 cd/m2	Yes	16Hrs		O(3), (2,0)	-	-	WebOS 4.1	3Year	600x400mm	Internal
86UL3G-BAEU	86UL3G	86"	3840 x 2160	350 cd/m2	No	16Hrs		O(3), (2,0)	-	-	WebOS 4.1	3Year	600x400mm	Internal
4K Displays with webOS														
43UM3DF-BAEU	43UM3DF	43"	3840 x 2160	350 cd/m2	Yes	18Hrs		O(3), HDCP 2.2	O(1), HDCP 2.2	O(1)	WebOS 4.1	3Year	200x200mm	Internal
49UM3DG-BAEU	49UM3DG	49"	3840 x 2160	350 cd/m2	Yes	18Hrs		O(3), HDCP 2.2			WebOS 4.1	3Year	300x300mm	Internal
55UM3DG-BAEU	55UM3DG	55"	3840 x 2160	350 cd/m2	Yes	18Hrs		O(3), HDCP 2.2			WebOS 4.1	3Year	300x300mm	Internal
65UM3DG-BAEU	65UM3DG	65"	3840 x 2160	350 cd/m2	Yes	18Hrs		O(3), HDCP 2.2			WebOS 4.1	3Year	300x300mm	Internal
75UM3E-BAEU	75UM3E	75"	3840 x 2160	350 cd/m2	Yes	24Hrs		O(3), HDCP 2.2	O(1), HDCP 1.3	O(1)	WebOS 4.0	3Year	600x400mm	Internal
86UM3E-BAEU	86UM3E	86"	3840 x 2160	350 cd/m2	No	16Hrs		O(3), HDCP 2.2	O(1), HDCP 1.3	O(1)	WebOS 4.0	3Year	600x400mm	Internal
Pro 4K Displays with webOS														
43UH5F-H.AEU	43UH5F-H	43"	3840 x 2160	500 cd/m2	Yes	24Hrs		O(3), HDCP 2.2	O(1), HDCP 2.2	O(1)	WebOS 4.1	3Year	200x200mm	Internal
49UH5F-H.AEU	49UH5F-H	49"	3840 x 2160	500 cd/m2	Yes	24Hrs		O(3), HDCP 2.2	O(1), HDCP 2.2	O(1)	WebOS 4.1	3Year	300x300mm	Internal
55UH5F-H.AEU	55UH5F-H	55"	3840 x 2160	500 cd/m2	Yes	24Hrs		O(3), HDCP 2.2	O(1), HDCP 2.2	O(1)	WebOS 4.1	3Year	300x300mm	Internal
65UH5F-H.AEU	65UH5F-H	65"	3840 x 2160	500 cd/m2	Yes	24Hrs		O(3), HDCP 2.2	O(1), HDCP 2.2	O(1)	WebOS 4.1	3Year	300x300mm	Internal
75UH5F-H.AEU	75UH5F-H	75"	3840 x 2160	500 cd/m2	Yes	24Hrs		O(3), HDCP 2.2	O(1), HDCP 2.2	O(1)	WebOS 4.0	3Year	600x400mm	Internal
86UH5F-H.AEU	86UH5F-H	86"	3840 x 2160	500 cd/m2	Yes	24Hrs		O(3), HDCP 2.2	O(1), HDCP 2.2	O(1)	WebOS 4.0	3Year	600x400mm	Internal
98UH5F-H.AEU	98UH5F-H	98"	3840 x 2160	500 cd/m2	Yes	24Hrs		O(3), HDCP 2.2	O(1), HDCP 2.2	O(1)	WebOS 4.1	3Year	800x400mm	Internal

UHD Commercial TV with Essential Smart Function

The UT640S Series is specifically designed for diverse business environments. By providing compatibility with AV Control systems and DPM as well as its smart connectivity, simple user friendly interface, and UHD picture quality.



49UT640S

LG UHD Signage Provides Information Effectively

The UM3DG series is a UHD signage that has been optimized for various indoor environments. It features superior UHD quality, slim design, external dust protection, and various convenience for users.



65UM3DG

Large Format Displays

High End Displays

Projection

Small Format Displays

Commercial & Consumer TV

AV Solutions

Mounts & Accessories

Digital signage solutions are designed with a focus on a deep understanding of the industry and customer convenience. Integrated solutions ranging from content management, service to maintenance are delivered. The best content deserves the best display. With LG Digital Signage you choose impressive quality.

Manufacturer Model No.	Model	Screen Size	Resolution	Brightness (nits)	Portrait	Usage	Bezel Size (mm)	HDMI	DP	DVI	SOC Enabled	Warantee	Vesa Mount	Speakers
High Pro 4K Displays with webOS														
49UH7F-BAEU	49UH7F	49"	3840 x 2160	700 cd/m2	Yes	24Hrs		O(3), HDCP2.2	O(1), HDCP2.2	O(1)	WebOS 4.1	3Year	300x300mm	Internal
55UH7F-BAEU	55UH7F	55"	3840 x 2160	700 cd/m2	Yes	24Hrs		O(3), HDCP2.2	O(1), HDCP2.2	O(1)	WebOS 4.1	3Year	300x300mm	Internal
65UH7F-BAEU	65UH7F	65"	3840 x 2160	700 cd/m2	Yes	24Hrs		O(3), HDCP2.2	O(1), HDCP2.2	O(1)	WebOS 4.1	3Year	300x300mm	Internal
High Brightness LED Window Facing														
49XS2E-BAEUZ	49XS2E	49"	1920 x 1080	2500 cd/m2	Yes	24Hrs		O(2), HDMI1/2 : HDCP 2.2	O(1), HDCP 1.3	O(1)	WebOS 3.0	3Year	600x400mm	External
49XS4F-BAEU	49XS4F	49"	1920 x 1080	4000 cd/m2	Yes	24Hrs		O(2), HDMI1/2 : HDCP 2.2	O(1), HDCP 1.3	O(1)	WebOS 3.0	3Year	600x400mm	External
55XS2E-BAEUZ	55XS2E	55"	1920 x 1080	2500 cd/m2	Yes	24Hrs		O(2), HDMI1/2 : HDCP 2.2	O(1), HDCP 1.3	O(1)	WebOS 3.0	3Year	600x400mm	External
55XS4F-BAEU	55XS4F	55"	1920 x 1080	4000 cd/m2	Yes	24Hrs		O(2), HDMI1/2 : HDCP 2.2	O(1), HDCP 1.3	O(1)	WebOS 3.0	3Year	600x400mm	External
75XS2E-BAEU	75XS2E	75"	3840 x 2160	2500 cd/m2	Yes	24Hrs		O(2), HDMI1/2 : HDCP 2.2	O(1), HDCP 1.3	O(1)	WebOS 3.0	3Year	600x400mm	External
75XS4G-BAEU	75XS4G	75"	3840 x 2160	4000 cd/m2	Yes	24Hrs		O(2), HDMI1/2 : HDCP 2.2	O(1), HDCP 1.3	O(1)	WebOS 4.0	3Year	600x400mm	External
Videowall														
49VL5F-AAEU	49VL5F	49"	1920 x 1080	450 cd/m2	Yes	24Hrs	2,3mm (T/L) 1,2 (B/R)	O(1), HDCP 1.4	X	O(1)		3Year	600x400mm	X
55VL5F-AAEU	55VL5F	55"	1920 x 1080	500 cd/m2	Yes	24Hrs	2,3mm (T/L) 1,2 (B/R)	O(2), HDCP2.2	O(1)	O(1)	SuperSign W	3Year	600x400mm	X
55VL7F-AAEU	55VL7F	55"	1920 x 1080	700 cd/m2	Yes	24Hrs	2,3mm (T/L) 1,2 (B/R)	O(2), HDCP2.2	O(1)	O(1)	SuperSign W	3Year	600x400mm	X
55VM5E-AAEU	55VM5E	55"	1920 x 1080	500 cd/m2	Yes	24Hrs	0,9mm (even)	O(2), HDCP2.2	O(1)	O(1)	webOS 4.0	3Year	600x400mm	X
55VM5F-HAEU	55VM5F-H	55"	1920 x 1080	500 cd/m2	Yes	24Hrs	0,44mm (even)	O(2), HDCP2.2	O(1)	O(1)	webOS 4.0	3Year	600x400mm	X
55VH7E-AAEU	55VH7E	55"	1920 x 1080	700 cd/m2	Yes	24Hrs	0,9mm (even)	O(2), HDCP2.2	O(1)	O(1)	webOS 4.0	3Year	600x400mm	X
55VH7F-AAEU	55VH7F	55"	1920 x 1080	700 cd/m2	Yes	24Hrs	0,44mm (even)	O(2), HDCP2.2	O(1)	O(1)	webOS 4.0	3Year	600x400mm	X
Touch Display														
65TR3BF-BAEUQ	65TR3BF	65"	3840 x 2160	350cd/m2 (w/Pro)	No	16Hrs		O(3)	-	-	Android 8.0	3Year	600x400mm	Internal
75TR3BF-BAEUQ	75TR3BF	75"	3840 x 2160	330cd/m2 (w/Pro)	No	16Hrs		O(3)	-	-	Android 8.0	3Year	800x400mm	Internal
86TR3BF-BAEUQ	86TR3BF	86"	3840 x 2160	330cd/m2 (w/Pro)	No	16Hrs		O(3)	-	-	Android 8.0	3Year	800x600mm	Internal
75TC3D-BAEU	75TC3D	75"	3840 x 2160	500 cd/m2	Yes	24Hrs		O(3), HDCP 1.4	O(1), HDCP 1.4	O(1)	webOS 3.0+	3Year	600x400mm	Internal
86TN3F-BAEU	86TN3F	86"	3840 x 2160	350cd/m2 (w/Pro)	No	16Hrs		O(2)	O(1), HDCP 1.4	O(1)	webOS 4.0	3Year	800x400mm	Internal
OLED Signage														
55EF5F-LAEU	55EF5F-L	55"	1920 x 1080	150/400nit (APL)	Yes	18Hrs		O(1), HDCP 2.2	O(1), HDCP 1.4	X	webOS 4.0	3Year		X
55EF5F-PAEU	55EF5F-P	55"	1920 x 1080	150/400nit (APL)	Yes	18Hrs		O(1), HDCP 2.2	O(1), HDCP 1.4	X	webOS 4.0	3Year		X
55EJ5E-BAEU	55EJ5E	55"	1920 x 1080	150/400nit (APL)	Yes	18Hrs		O(1), HDCP 2.2	O(1), HDCP 1.4	X	webOS 3.0+	3Year		X
65EJ5E-BAEU	65EJ5E	65"	3840 x 2160	150/400nit (APL)	Yes	18Hrs		O(1), HDCP 2.2	O(1), HDCP 1.4	X	webOS 3.0+	3Year		X
55EWSF-AAEU	55EWSF	55"	1920 x 1080	150/400 (APL* 100%)	Yes	18Hrs		O(1), HDCP 2.2	O(1), HDCP 1.4	X	webOS 3.0+	3Year		X
55EWSF-AAEU	55EWSF	55"	1920 x 1080	150/400 (APL* 100%/25%)		18Hrs		O(1), HDCP 2.2	O(1), HDCP 1.4	X	webOS 4.0	3Year		X
Specials														
22SM3G-BAEU	22SM3G	22"	1920 x 1080	250 cd/m2	No	16Hrs		O(1), HDCP 2.2	X	X	webOS 4.0	3Year	100x100mm	2W (1W x 2)
WP400AEU	WP400							O(2), HDCP2.2	O(1), HDCP1.3		webOS 4.0			
Ultra Stretch														
86BH5F-BAEU	86BH5F	86"	3840 x 600	500 cd/m2	Yes	24Hrs		O(3), HDCP2.2, HDCP1.4	O(1), HDCP 1.3	O(1)		3Year	600x400mm	X
88BH7F-BAEU	88BH7F	88"	3840 x 600	700 cd/m2	Yes	24Hrs		O(3), HDCP2.2, HDCP1.4	O(1), HDCP 1.3	O(1)		3Year	600x400mm	X

Bring your imagination to life with OLED signage

LG's flexible, curved, slim and lightweight OLED Signage

55EF5G-L





Designed to be robust and reliable, you can guarantee that NEC displays are built to last. From 24/7 backlit displays to entry-level screens, NEC has a broad range of large format displays that are sure to meet your customer's needs.

Clear, detailed imagery for unobtrusive signage

Enjoy hassle-free 24/7 operation with the C751Q. With an industrial strength and premium-grade panel, this display continually outperforms.



C751Q

Pairs well with...

Deliver relevant and timely messages to your audience



BrightSign®

HD224

Manufacturer Model No.	Model	Screen Size	Resolution	Brightness (nits)	Portrait Usage	Bezel Size (mm)	HDMI	DVI	VGA	Display Port	OPS Slot	RS-323	RJ-45	Removable logo	Vesa Mount	Speakers	
E series - 16 hour daily operation																	
60004541	E32Z	32"	1920x1080	350	No	16,7	16.1 / 11.9	3	0	1	0	No	1	1	Yes	100x100	2x 5W Integrated
60004544	E437Q	43"	3840x2160	350	No	16,7	14.9 B 11.9	3	0	1	0	No	1	1	Yes	200x200	2x 10W Integrated
60004548	E507Q	49"	3840x2160	350	No	16,7	14.9 B 11.9	3	0	1	0	No	1	1	Yes	200x400	2x 10W Integrated
60004552	E557Q	55"	3840x2160	350	No	16,7	14.7 / 12.9	3	0	1	0	No	1	1	Yes	400x200	2x 10W Integrated
60004557	E657Q	65"	3840x2160	350	No	16,7	14.9 / 13.9	3	0	1	0	No	1	1	Yes	400x400	2x 10W Integrated
C series - 24 hour daily operation																	
60004236	C431	43"	1920x1080	400	Yes	24,7	12.4 / 12.4	3	0	1	1	No	1	1	Yes	300x300	2x 10W Integrated
60004237	C501	50"	1920x1080	400	Yes	24,7	12.4 / 12.4	3	0	1	1	No	1	1	Yes	300x300	2x 10W Integrated
60004238	C551	55"	1920x1080	400	Yes	24,7	12.4 / 12.4	3	0	1	1	Yes	1	1	Yes	300x300	2x 10W Integrated
60004314	C651Q	65"	3840x2160	350	Yes	24,7	12.8 / 12.8	3	0	1	2	Yes	1	1	Yes	300x300	2x 10W Integrated
60004315	C751Q	75"	3840x2160	350	Yes	24,7	14.8 / 14.8	3	0	1	2	Yes	1	1	Yes	300x300	2x 10W Integrated
60004031	C861Q	86"	3840x2160	350	Yes	24,7	15.3 / 15.3	3	0	1	2	Yes	1	1	Yes	300x300	2x 10W Integrated
60004516	C981Q	98"	3840x2160	350	Yes	24,7	15.9 / 15.9	3	0	1	2	Yes	1	1	Yes	400x400	2x 10W Integrated
V series - 24 hour daily operation																	
60004529	V323-3 (PG)	32"	1920x1080	450	Yes	24,7	24/24	1	1	1	1	Yes	1	1	No	200x200	2x 10W Integrated
60004033	V404 (PG)	40"	1920x1080	450	Yes	24,7	13.2 / 13.2	2	1	1	2	Yes*	1	1	Yes	300x300	2x 10W Integrated
60004034	V484 (PG)	48"	1920x1080	500	Yes	24,7	13.2 / 13.2	2	1	1	2	Yes*	1	1	Yes	300x300	2x 10W Integrated
60004035	V554 (PG)	55"	1920x1080	500	Yes	24,7	18.3 / 18.3	2	1	1	2	Yes*	1	1	Yes	300x300	2x 10W Integrated
60004528	V554Q (PG)	55"	3840x2160	500	Yes	24,7	18.3 / 18.3	2	1	1	2	Yes	1	1	Yes	300x300	2x 10W Integrated
60004036	V654Q (PG)	65"	3840x2160	500	Yes	24,7	12.8 / 12.8	3	0	1	2	Yes	1	1	Yes	300x300	2x 10W Integrated
60004317	V754Q (PG)	75"	3840x2160	500	Yes	24,7	14.8 / 14.8	3	0	1	2	Yes	1	1	Yes	300x300	2x 10W Integrated
60004037	V864Q (PG)	86"	3840x2160	500	Yes	24,7	15.3 / 15.3	3	0	1	2	Yes	1	1	Yes	300x300	2x 10W Integrated
60004318	V984Q (PG)	98"	3840x2160	500	Yes	24,7	15.9 / 15.9	3	0	1	2	Yes	1	1	Yes	400x400	2x 10W Integrated
P series - 24 hour operation																	
60004039	P404 (PG/MG)	40"	1920x1080	700	Yes	24,7	13.2 / 13.2	2	1	1	2	Yes*	1	1	Yes	300x300	2x 10W Integrated
60004040	P484 (PG/MG)	48"	1920x1080	700	Yes	24,7	13.2 / 13.2	2	1	1	2	Yes*	1	1	Yes	300x300	2x 10W Integrated
60004041	P554 (PG/MG)	55"	1920x1080	700	Yes	24,7	18.5 / 18.5	2	1	1	2	Yes	1	1	Yes	300x300	2x 10W Integrated
60004042	P654Q (PG)	65"	3840x2160	650	Yes	24,7	12.8 / 12.8	3	0	1	2	Yes	1	1	Yes	300x300	2x 10W Integrated
60004316	P754Q (PG)	75"	3840x2160	650	Yes	24,7	14.8 / 14.8	3	0	1	2	Yes	1	1	Yes	300x300	2x 10W Integrated
X series 24 hour daily operation (high bright)																	
60003912	X554HB	55"	1920x1080	2500	Yes	24,7	19.5/19.5	1	1	1	1	Yes	1	1	Yes	300x300	2x 10W Integrated
60003913	X754HB	75"	1920x1080	2500	Yes	24,7	21/21	1	1	1	1	Yes	1	1	Yes	300x300	2x 10W Integrated
BT series - Bar Type 24/7 Stretched Wide																	
60004365	BT421	42"	1920x480	700	Yes	24,7	14.7/9.8/7.9	0	2	0	0	No	1	1	Yes	400x100	2x 10W Integrated
Videowall screens																	
60004518	UN462VA	46"	1920x1080	500 (VA)	Yes	24,7	2.3 / 1.2	1	1	1	1	Yes	1	1	Yes	300x300	N/A
60004517	UN462A	46"	1920x1080	700 (VA)	Yes	24,7	2.3 / 1.2	1	1	1	1	Yes	1	1	Yes	300x300	N/A
60004520	UN492VS	49"	1920x1080	500 (IPS)	Yes	24,7	0.9 / 0.9	1	1	1	1	Yes	1	1	Yes	300x300	N/A
60004519	UN492S	49"	1920x1080	700 (IPS)	Yes	24,7	0.9 / 0.9	1	1	1	1	Yes	1	1	Yes	300x300	N/A
60004884	UN552	55"	1920x1080	700 (IPS)	Yes	24,7	2.3 / 1.2	1	1	1	1	Yes	1	1	Yes	400x400	Optional
60004525	UN552A	55"	1920x1080	700 (VA)	Yes	24,7	2.3 / 1.2	1	1	1	1	Yes	1	1	Yes	400x400	Optional
60004882	UN552V	55"	1920x1080	500 (IPS)	Yes	24,7	2.3 / 1.2	1	1	1	1	Yes	1	1	Yes	400x400	Optional
60004524	UN552VS	55"	1920x1080	500 (IPS)	Yes	24,7	0.6 / 0.6	1	1	1	1	Yes	1	1	Yes	400x400	Optional
60004525	UN552S	55"	1920x1080	700 (IPS)	Yes	24,7	0.6 / 0.6	1	1	1	1	Yes	1	1	Yes	400x400	Optional

Warranty - 3 year

* = Raspberry Pi / OMP signage player option available PG = Protection Glass version available MG = Mirror Glass version available



Premium Solutions. DynaScan Technology is the premier manufacturer of high brightness displays. Founded in 1998, DynaScan is an award-winning industry leader in the design, development and manufacturer of cutting-edge display solutions.

Manufacturer Model	Model	Screen Size	Resolution	Brightness	Portrait	Usage	Bezel Size (mm)	HDMI	DVI	Display Port	OPS Slot	RS-323	RJ-45	Vesa Mount	
Ultra High Brightness LCD's															
DS851LR4-1	DS851LR4-1	85"	3840x2160	3500	yes	24/7	18	2	no	yes	yes	yes	yes	600x400	
DS752LR4	DS752LR4	75"	3840x2160	3500	yes	24/7	18.6/18.6/17.7/17.8	2	no	yes	yes	yes	yes	800x400	
DS751LT4	DS751LT4	75"	1920x1080	2500	yes	24/7	11.7 / 11.7 / 11.7 / 11.7	no	yes	yes	no	yes	yes	900x400	
DS652LR5	DS652LR5	65"	1920x1080	4000	yes	24/7	18 / 18 / 11.9 / 11.9	no	yes	yes	no	yes	yes	400x400	
DS551DR4	Dual Sides	55"	1920x1080	3000 Front /	yes	24/7	68	yes	no	no	no	yes	yes	998x398 x1048	
DS552LT7	DS552LT7	55"	1920x1080	7000	yes	24/7	10.9	yes	yes	yes	yes	yes	yes	400x400	
DS552LT6-1	DS552LT6-1	55"	1920x1080	5500	yes	24/7	10.9	YES	YES	yes	yes	yes	yes	400x400	
DS552LT4-1	DS552LT4-1	55"	1920x1080	3500	yes	24/7	10.9	yes	yes	yes	yes	yes	yes	400x400	
DS552LT4-M	DS552LT4-M	55"	1920x1080	4000	yes	24/7	10.9	yes	yes	yes	no	yes	yes	400x400	
DS551X4	DS551X4	55"	1920x1080	3000	yes	24/7	1.25 / 2.25 / 2.25 / 1.25	no	yes	no	no	yes	no	400x400	
DS491LT6	DS491LT6	49"	1920x1080	5500	yes	24/7	8.7 / 8.7 / 8.5 / 8.5	yes	yes	yes	yes	yes	yes	400x400	
DS491LT4	DS491LT4	49"	1920x1080	3500	yes	24/7	8.7 / 8.7 / 8.5 / 8.5	yes	yes	yes	yes	yes	yes	400x400	
DS491LT4-M	DS491LT4-M	49"	1920x1080	4000	yes	24/7	8.7 / 8.7 / 8.5 / 8.5	yes	yes	yes	no	yes	yes	400x400	
DS421LT4	DS421LT4	42"	1920x1080	2500	yes	24/7	5.9	no	yes	yes	no	yes	yes	400x200	
DS371BT4	DS371BT4	37"	1920x540	3000	yes	24/7	11.7 / 11.7 / 5.6 / 5.6	no	yes	no	yes	yes	yes	200x100	
DS322LR4-1	DS322LR4-1	32"	1920x1080	2500	yes	24/7	L/R 13.1; T/B 18	yes	yes	no	no	yes	yes	200x200	
Premium Indoor LCD's															
DI100ST2		100"	3840x2160	700	yes	24/7	21 / 21 / 22.3 / 22.3	yes	no	yes	yes	yes	yes	400x800	
DI881LT2		88"	3840x1080	1000	yes	24/7	5.9 / 5.9 / 4.4 / 4.4	yes	no	yes	yes	yes	yes	600x400	
DI651ST2		65"	1920x1080	800	yes	24/7	L/R 12.9; T/B 22	yes	yes	yes	yes	yes	yes	400x400	
DI551ST2		55"	1920x1080	1000	yes	24/7	10.9	yes	yes	yes	yes	yes	yes	400x400	
Full Outdoor LCD's															
DO552LR4		55"	1920x1080	3500	yes	24/7	97.6 / 97.6 / 57.5 / 57.5	yes	yes	yes	yes	yes	yes	500x800	

High Brightness

A high brightness display ensures that your content is always clearly visible, regardless of environmental factors such as bright sunlight. High brightness displays can be found outdoors in special enclosures, but also in shop windows.

Go big!

Engage audiences with an eye-catching 100", 700 nit Brightness, UHD 4K Resolution



DI100ST2

Pairs well with...

Easy-glide design which allows for total wall access

Peerless-AV's Supreme Full Service Videowall mount with Quick Release raises the bar of excellence with an enhanced feature set centred on ease of install and display alignment.



SF660P

NEW MESSAGE SERIES LARGE FORMAT DISPLAYS

Your Message, Your Way

The NEC MESSAGE Series is a new range of Large Format Displays perfectly tailored to deliver your message, your way, today and in the future.

- > **Next Generation Features** – the full range includes MESSAGE Essential (ME), MESSAGE (M) and MESSAGE Advanced (MA) Series models to address all retail and corporate signage applications
- > **Modular Design** - incorporating RPi and SDM modules, allowing the displays to be easily upgraded via plug & play
- > **MediaPlayer** - out of the box ready for intuitive signage creation delivering real-time visual experiences
- > **NEC Quality** - intelligent in-built cooling system, metal casing and inherent NEC long-life reliability



Interactive displays



By changing the way knowledge can be shared, SMART empowers everyone —from primary school students to innovators in Fortune 500 companies—to come together, explore and expand on ideas, bringing them to life without geographical or technological limitations.

Education

Manufacturer	Model No.	Model	Screen Size	Resolution	Touch Points	Technology	Brightness	Anti Glare	Portrait	Usage	OPS Slot	HDMI	DVI	VGA	Display Port	SD Card	RS-323	RJ-45	Removable Logo	Internal Wi-Fi	Vesa storage	Mount	Speakers
SMART Board 7000R Series Interactive Flat Panels																							
SBID-7275R	7275R	75"	3840x2160	20	HyPr Touch with EMR	350	Yes	No	12/7	Yes	Yes	No	Yes	No	No	Yes	Yes	No	Yes	Yes	800x400	Yes	
SBID-7286R	7286R	86"	3840x2160	20	HyPr Touch with EMR	350	Yes	No	12/7	Yes	Yes	No	Yes	No	No	Yes	Yes	No	Yes	Yes	800x400	Yes	
SMART Board 6000S Series Interactive Flat Panels																							
SBID-6265S	6265S	65"	3840x2160	20	HyPr Touch with EMR	360	Yes	No	12/7	Yes	Yes	No	Yes	No	No	Yes	Yes	No	Yes	Yes	600x400	Yes	
SBID-6275S	6275S	75"	3840x2160	20	HyPr Touch with EMR	360	Yes	No	12/7	Yes	Yes	No	Yes	No	No	Yes	Yes	No	Yes	Yes	600x400	Yes	
Education IQ Modules																							
UCK-PCM8-i5	PCM-8-i5	N/A	N/A	N/A	N/A	N/A	N/A	N/A	N/A	N/A	N/A	N/A	N/A	N/A	N/A	N/A	N/A	N/A	N/A	N/A	N/A	N/A	N/A
UMC-PCM8-i7V	PCM-8-i7V	N/A	N/A	N/A	N/A	N/A	N/A	N/A	N/A	N/A	N/A	N/A	N/A	N/A	N/A	N/A	N/A	N/A	N/A	N/A	N/A	N/A	N/A
SMART Board MX Series Interactive Display																							
SBID-MX265V2	MX 265 V2	65"	3840x2160	20	HyPr Touch™ with Advanced IR	400	Yes	No	12/7	Yes	Yes	No	Yes	No	No	Yes	Yes	No	Yes	Yes	600x400	Yes	
SBID-MX275V2	MX 275 V2	75"	3840x2160	20	HyPr Touch™ with Advanced IR	400	Yes	No	12/7	Yes	Yes	No	Yes	No	No	Yes	Yes	No	Yes	Yes	600x400	Yes	
SBID-MX286V2	MX 286 V2	86"	3840x2160	20	HyPr Touch™ with Advanced IR	400	Yes	No	12/7	Yes	Yes	No	Yes	No	No	Yes	Yes	No	Yes	Yes	700x400	Yes	
SMART Podium																							
SP624	SP624	24"	1920x1080	10	Capacitive	210	No	no	12/7	No	No	Yes	No	No	No	No	No	No	No	Yes	No	100x200	
800 Series SMART interactive Whiteboard																							
SBX885	SBX885	87"	N/A	N/A	N/A	N/A	N/A	N/A	N/A	N/A	N/A	N/A	N/A	N/A	N/A	N/A	N/A	N/A	N/A	N/A	N/A	N/A	N/A
M600 Series SMART Interactive Whiteboard																							
SBM685	SBM685	87"	N/A	N/A	N/A	N/A	N/A	N/A	N/A	N/A	N/A	N/A	N/A	N/A	N/A	N/A	N/A	N/A	N/A	N/A	N/A	N/A	N/A
SBM680	SBM680	77"	N/A	N/A	N/A	N/A	N/A	N/A	N/A	N/A	N/A	N/A	N/A	N/A	N/A	N/A	N/A	N/A	N/A	N/A	N/A	N/A	N/A

All SMART installations require a site survey completion – mandatory order prior to ordering install SKU. Installation pricing is for quotation purposes only and based on major metro areas in NA & EU. Once site-survey is completed any variations to standard install costs will be quoted to reseller to place with PO for Install SKU. Uplift charges may apply to installs outside of major metro areas in NA & EU and will be charged via the SV C-ONSITESERVICE SKUs

“Our hearing is a more powerful emotional sense than our sight, so there is a clear opportunity for businesses to broaden their marketing horizons and gain a competitive edge by making better use of audio”

Daniel Lafferty (Director of Music & Voice, PHMG)

Complete the experience

Have you considered what audio products your end-user may need? See page 37 for our range of audio products



The way we work is changing, and your technology needs to keep up. SMART displays and software enable more productive and effective collaboration leading to faster results in any work environment.

SMART
Collaborate Naturally™

Corporate

Manufacturer Model No.	Model	Screen Size	Resolution	Touch Points	Technology	Brightness	Anti Glare	Portrait	Usage	OPS Slot	HDMI	DVI	VGA	Display Port	SD Card	RS-323	RJ-45	Removable Logo	Internal Wi-Fi	Vesa storage Mount	Speakers	
SMART Board MX Pro Series Interactive Display for Business																						
SBID-MX265-V2-PW	MX265 V2-PW	65"	3840x2160	20	HyPr Touch™ with Advanced IR	400	Yes	No	12/7	Yes	Yes	No	Yes	Yes	No	Yes	Yes	No	Yes	Yes	600x400	Yes
SBID-MX275-V2-PW	MX275-V2-PW	75"	3840x2160	20	HyPr Touch™ with Advanced IR	400	Yes	No	12/7	Yes	Yes	No	Yes	Yes	No	Yes	Yes	No	Yes	Yes	600x400	Yes
SBID-MX286-V2-PW	MX286-V2-PW	86"	3840x2160	20	HyPr Touch™ with Advanced IR	400	Yes	No	12/7	Yes	Yes	No	Yes	Yes	No	Yes	Yes	No	Yes	Yes	700x400	Yes
SMART Board 7000R Pro Series Interactive Displays																						
SBID-7275R-P	7275R P	75"	3840x2160	20	HyPr Touch with EMR	350	Yes	No	12/7	Yes	Yes	No	Yes	Yes	No	Yes	Yes	No	Yes	Yes	800x400	Yes
SBID-7275R-PW	7275R PW	75"	3840x2160	20	HyPr Touch with EMR	350		No	12/7	Yes	Yes	No	Yes	Yes	No	Yes	Yes	No	Yes	Yes	800x400	Yes
SBID-7286R-P	7286R P	86"	3840x2160	20	HyPr Touch with EMR	350		No	12/7	Yes	Yes	No	Yes	Yes	No	Yes	Yes	No	Yes	Yes	800x600	Yes
SBID-7286R-PW	7286R PW	86"	3840x2160	20	HyPr Touch with EMR	350		No	12/7	Yes	Yes	No	Yes	Yes	No	Yes	Yes	No	Yes	Yes	800x600	Yes
SMART Board 6000S Pro series Interactive Flat Panels for Business*																						
SBID-6275S-PW	6275S PW	75"	3840x2160	20	HyPr Touch with InGlass	360	Yes	No	12/7	Yes	Yes	No	Yes	No	No	Yes	Yes	No	Yes	Yes	600x400	Yes
SBID-6275S-P	6275S P	75"	3840x2160	20	HyPr Touch with InGlass	360		No	12/7	Yes	Yes	No	Yes	No	No	Yes	Yes	No	Yes	Yes	600x400	Yes
SBID-6265S-PW	6265S PW	65"	3840x2160	20	HyPr Touch with InGlass	360		No	12/7	Yes	Yes	No	Yes	No	No	Yes	Yes	No	Yes	Yes	600x400	Yes
SBID-6265S-P	6265S P	65"	3840x2160	20	HyPr Touch with InGlass	360		No	12/7	Yes	Yes	No	Yes	No	No	Yes	Yes	No	Yes	Yes	600x400	Yes
IQ modules																						
UGK-PCMB-15	PCMB 15	N/A	N/A	N/A	N/A	N/A	N/A	N/A	N/A	N/A	N/A	N/A	N/A	N/A	N/A	N/A	N/A	N/A	N/A	N/A	N/A	N/A
UGK-PCMB-17V	PCMB 17V	N/A	N/A	N/A	N/A	N/A	N/A	N/A	N/A	N/A	N/A	N/A	N/A	N/A	N/A	N/A	N/A	N/A	N/A	N/A	N/A	N/A
SMART Podium for Business																						
SP624P	SP 624P	24"	1920x1080	10	Capacitive	210	No	No	12/7	No	No	Yes	No	No	No	No	No	No	Yes	No	100x200	N/A

*These products are built to order - The lead time is up to 12 weeks.

Mount your displays with ease

the SMART electric height-adjustable mobile stand features 26" (66 cm) of powered height adjustment with a safety bounce-back feature that reverses direction briefly if an obstruction is detected.



Stylish design that suits every interior

The JBL Pro SoundBar PSB-1 is a cost-effective, commercial-grade active soundbar.



Collaborate with ease

The Solstice Pod is a turnkey wireless presentation solution that combines award-winning Solstice collaboration software integrated on a dedicated hardware platform



Increase meeting room engagement

The display's HyPr Touch™ with EMR technology provides industry leading touch and digital ink performance. You can interact with applications without switching tools or modes.



Large Format Displays

High End Displays

Projection

Small Format Displays

Commercial & Consumer TV

AV Solutions

Mounts & Accessories

SAMSUNG

Today's business and educational environments require advanced compatibility for users to easily read and share content. Through its enhanced and versatile connectivity, Samsung's e-Board display allows users to access, share and revise content via their own laptops, tablets and smartphones.

Manufacturer Model No.	Model	Screen Size	Resolution	Touch Points	Technology	Brightness	Portrait Usage	OPS Slot	HDMI	DVI	VGA	Display Port	USB	RS-323	RJ-45	Removable Logo	Wi-Fi	Internal storage	Vesa Mount	Speakers	
Samsung Flip																					
LH55WMRWBGCXEN	WM55R	55"	UHD	4	In-Glass	350	Yes	16/7	No	2	No	No	No	1	No	1	No	Yes	8GB	400x400	Yes
LH65WMRWBGCXEN	WM65R	65"	UHD	4	In-Glass	350	Yes	16/7	No	2	No	No	No	1	No	1	No	Yes	8GB	400x400	Yes
LH75QBNWLGCC/EN	QB75NW	75"	UHD	10*	Infrared	300	Yes	16/7	N/A	3	1	No	1	3	1	1	No	Yes	8GB	400x400	10W x 2

* 4 Touch Points SoC

NEC

NEC has worked with selected partners, including 3M Capacitive, dispersive signal technology and optical imaging to deliver market-leading touchscreen solutions that can operate in all environments.

Manufacturer Model No.	Model	Screen Size	Resolution	Touch Points	Technology	Brightness	Anti Glare	Portrait Usage	OPS Slot	HDMI	DVI	VGA	Display Port	SD Card	RS-323	RJ-45	Removable Logo	Wi-Fi	Internal storage	Vesa Mount	Speakers	
P-Series touch																						
60004252	P404SST	40"	1920x1080	10	ShadowSense	700	Yes	Yes	24/7	Yes	Yes	Yes	Yes	Yes	Yes	Yes	Yes	Yes	No	No	300x300	2x 10W Integrated
60004257	P484SST	48"	1920x1080	10	ShadowSense	700	Yes	Yes	24/8	Yes	Yes	Yes	Yes	Yes	Yes	Yes	Yes	Yes	No	No	300x300	2x 10W Integrated
60004258	P554SST	55"	1920x1080	10	ShadowSense	700	Yes	Yes	24/9	Yes	Yes	Yes	Yes	Yes	Yes	Yes	Yes	Yes	No	No	300x300	2x 10W Integrated
C-Series Touch																						
60004574	C651Q SST	65"	3840x2160	10	ShadowSense	350	Yes	Yes	24/7	Yes	Yes	No	Yes	Yes	Yes	Yes	Yes	No	No	400x400	2x 10W	
60004575	C751Q SST	75"	3840x2160	10	ShadowSense	350	Yes	Yes	24/7	Yes	Yes	No	Yes	Yes	Yes	Yes	Yes	No	No	400x400	2x 10W	
60004576	C861Q SST	86"	3840x2160	10	ShadowSense	350	Yes	Yes	24/7	Yes	Yes	No	Yes	Yes	Yes	Yes	Yes	No	No	400x400	2x 10W	
60004577	C981Q SST	98"	3840x2160	10	ShadowSense	350	Yes	Yes	24/7	Yes	Yes	No	Yes	Yes	Yes	Yes	Yes	No	No	400x400	2x 10W	
V-series Touch																						
60004354	V404T	40"	1920x1080	10	Infrared	440	Yes	Yes	24/7	Yes	Yes	Yes	Yes	Yes	Yes	Yes	Yes	Yes	No	No	300x300	2x 10W Integrated
60004355	V848T	48"	1920x1080	10	Infrared	440	Yes	Yes	24/7	Yes	Yes	Yes	Yes	Yes	Yes	Yes	Yes	Yes	No	No	300x300	2x 10W Integrated
60004356	V554T	55"	1920x1080	10	Infrared	440	Yes	Yes	24/7	Yes	Yes	Yes	Yes	Yes	Yes	Yes	Yes	Yes	No	No	300x300	2x 10W Integrated
60004826	V654QT	65"	3840x2160	80	PCAP	500	Yes	Yes	24/7	Yes	Yes	Yes	Yes	Yes	Yes	Yes	Yes	Yes	No	No	400x400	2x 10W Integrated
V-series IGB																						
60004936	V554Q IGB	55"	3840x2160	20	In-Glass	500	Yes	Yes	24/7	Yes	Yes	No	No	Yes	Micro	Yes	Yes	Yes	No	No	400x400	Yes
60004678	V654Q IGB	65"	3840x2160	20	In-Glass	500	Yes	Yes	24/7	Yes	Yes	No	No	Yes	Micro	Yes	Yes	Yes	No	No	400x400	Yes
60004679	V754Q IGB	75"	3840x2160	20	In-Glass	500	Yes	Yes	24/7	Yes	Yes	No	No	Yes	Micro	Yes	Yes	Yes	No	No	400x400	Yes
60004680	V864Q IGB	86"	3840x2160	20	In-Glass	500	Yes	Yes	24/7	Yes	Yes	No	No	Yes	Micro	Yes	Yes	Yes	No	No	400x400	Yes
CB Series Collaboration																						
60004822	CB651Q	65"	3840x2160	20	Infrared	350	Yes	No	12/7	Yes	3	No	Yes	No	USB	Yes	Yes	No	Yes	Yes	600x400	2x 12W Integrated
60004824	CB751Q	75"	3840x2160	20	Infrared	350	Yes	No	12/7	Yes	3	No	Yes	No	USB	Yes	Yes	No	Yes	Yes	600x400	3x 12W Integrated
60004825	CB861Q	86"	3840x2160	20	Infrared	350	Yes	No	12/7	Yes	3	No	Yes	No	USB	Yes	Yes	No	Yes	Yes	600x400	4x 12W Integrated
Infinity Board																						
60001353	Infinity 552i	55"	3840x2160	20	In-Glass	500	Yes	Yes	24/7	Yes	Yes	No	No	Yes	Micro	Yes	Yes	Yes	Yes	Yes	400x400	Yes
60001301	Infinity 652i	65"	3840x2160	20	In-Glass	500	Yes	Yes	24/7	Yes	Yes	No	No	Yes	Micro	Yes	Yes	Yes	Yes	Yes	400x400	Yes
60001303	Infinity 752i	75"	3840x2160	20	In-Glass	500	Yes	Yes	24/7	Yes	Yes	No	No	Yes	Micro	Yes	Yes	Yes	Yes	Yes	400x400	Yes
60001305	Infinity 862i	86"	3840x2160	20	In-Glass	500	Yes	Yes	24/7	Yes	Yes	No	No	Yes	Micro	Yes	Yes	Yes	Yes	Yes	400x400	Yes

* NEC Infinity without OPS Available

Warranty - 3 year on-site. T&Cs apply

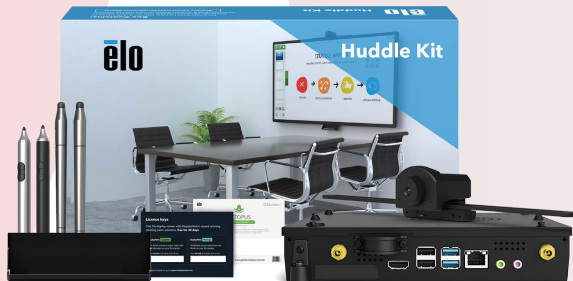
Built on a unified architecture, Elo's broad interactive portfolio allows our customers to easily Choose, Configure and Connect & Control to create a unique experience. Choose from digital signage displays, all-in-one systems, open-frame monitors and touchscreen monitors ranging from 7 to 65 inches. Configure with our unique Elo Edge Connect peripherals that allow use-specific solutions.



Manufacturer Model No.	Model	Screen Size	Resolution	Touch Point Technology	Brightness (nits)	Portrait	Usage	Anti glare	OPS Slot	HDMI	VGA	Display Port	USB	RS-323	RJ-45	Removable logo	Wi-Fi	Internal Storage	Optional Media Player	Vesa Mount	Speakers	
4K Interactive Displays																						
E215435	6553L	64.5"	3840x2160	40	PCAP	430	Yes	24/7	Yes (clear c	No	3	No	1	Yes	1	1	No	No	No	Yes	400X400, 600x600	2x 10 W
E215638	6553L	64.5"	3840x2160	20	Infrared	450	Yes	24/7	Yes	No	3	No	1	Yes	1	1	No	No	No	Yes	400X400, 600x600	2x 10 W
E628053	5553L	54.6"	3840x2160	40	PCAP	430	Yes	24/7	Yes (clear c	No	3	No	1	Yes	1	1	No	No	No	Yes	400X400, 600x600	2x 10 W
E628244	5553L	54.6"	3840x2160	20	Infrared	450	Yes	24/7	Yes	No	3	No	1	Yes	1	1	No	No	No	Yes	400X400, 600x600	2x 10 W
Full HD Interactive LF Displays																						
E218562	5502L	54.6"	1920x1080	12	PCAP (IR o	387	Yes	24/7	No	Yes	2	1	1	Yes	No	1	No	No	No	Yes	400X400	4x 5 W
E222373	4602L	46"	1920x1080	12	PCAP (IR o	430	Yes	24/7	No	Yes	2	1	1	Yes	No	1	No	No	No	Yes	400X400	4x 5 W
E222372	4202L	42"	1920x1080	12	PCAP (IR o	430	Yes	24/7	No	Yes	2	1	1	Yes	No	1	No	No	No	Yes	400X400	4x 5 W
E222371	3202L	31.5"	1920x1080	12	PCAP (IR o	430	Yes	24/7	No	Yes	2	1	1	Yes	No	1	No	No	No	Yes	400X400	4x 5 W
Large Format Open Frame Touchscreens																						
E220046	5543L	54.6"	1920x1080	12	PCAP	387	Yes	24/7	No	No	1	1	No	1 (for touch	No	1	No logo	No	No	No	400X400	No
E220574	4343L	42.5"	1920x1080	12	PCAP	387	Yes	24/7	No	No	1	1	No	1 (for touch	No	1	No logo	No	No	No	400X400	No
E304029	3243L	31.5"	1920x1080	10	PCAP (SAV	425	Yes	24/7	No	No	1	1	No	1 (for touch	No	1	No logo	No	No	No	400X200	No
I-Series Small Format Interactive All-in-one Displays																						
E611675	I-Series Andri	21.5"	1920x1080	10	PCAP	215	Yes		No	N/A	1 micro	No	No	Yes	No	1	No logo	Yes	32GB	N/A	100x100	2x 2 W
E611296	I-Series Andri	15.6"	1920x1080	10	PCAP	258	Yes		No	N/A	1 micro	No	No	Yes	No	1	No logo	Yes	32GB	N/A	75x75, 100x100	2x 2 W
E610902	I-Series Andri	10"	1280x800	10	PCAP	344	Yes		No	N/A	1 micro	No	No	Yes	No	1	No logo	Yes	32GB	N/A	75x75	2x 2 W
E693022	I-Series Wind	21.5"	1920x1080	10	PCAP	225	Yes		No	N/A	No	No	No	Yes	No	1	No logo	Yes	128GB	N/A	75x75, 100x100	2x 2 W
E692244	I-Series Wind	15.6"	1920x1080	10	PCAP	270	Yes		No	N/A	No	No	No	Yes	No	1	No logo	Yes	128GB	N/A	75x75	2x 2 W

Collaboration made easy

Connect the Elo Huddle Kit with an Elo large format 4K interactive display to create a robust huddle room solution. The kit includes Elo's conference camera and an i5 Windows 10 computer module complete with a pre-loaded intuitive dashboard for easy navigation to the pre-installed whiteboarding and wireless BYOD content-sharing software



Huddle Kit

Elo Edge Connect let's you do more

Built with versatility in mind, the Elo Edge Connect system offers a wide assortment of peripheral options compatible with most of our touchscreen product. Seamlessly attach any combination of up to four peripherals to the edge of the touchscreen creating a bespoke solution.



Edge Connect

- Large Format Displays
- High End Displays
- Projection
- Small Format Displays
- Commercial & Consumer TV
- AV Solutions
- Mounts & Accessories



Introducing

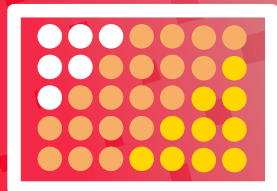
High End Displays, LED and Image Processing

With an increased demand for videowalls and large LED displays, we've expanded the range of high end displays that we offer. We've found that the 130" displays are by far the most compelling, especially as an off-the-shelf solution. These have proven to not just be for show but are already being utilised in commercial environments.

Not only is the LED market a large area of growth but so is the image and video processing technology that complements the screens. We've experienced a 30% growth in videowall processing technology uptake¹. Image and video processors ensure that every piece of content arrives at the right screen, at the right time, and with the right resolution.

As each solution will be unique, it's important to ensure the processors are the right choice. Luckily, we have our inhouse specialists to assist you find the right technology solutions that we offer. But it's not just your chance to get hands on with the technology, bring your customer with you and our specialists can deliver a bespoke demonstration directly to them.


130"
largest high end
display we offer



30%
growth in videowall
processing
technology¹

¹ Based on Midwich and Square One sales from April 2019 to March 2020 compared to April 2018 to March 2019. Data taken 6.3.20, exclusions & omissions exempt.

LED manufacturer, Absen, produces high quality solutions for rental, corporate and retail. With options for both indoor and outdoor applications, you are guaranteed high picture quality and colour consistency across the whole range.

Fixed indoor



iCon C138

Fixed indoor



Accliam A2725

Model	Pixel Pitch	Environment	LED Type	Brightness (nits)	Panel Width (mm)	Panel Height (mm)	Panel Resolution (H)	Panel Resolution (V)
Fixed Size Indoor								
iCon C110 2.0	1.27	Indoor	SMD	600	2440	1372	1920	1080
iCon C138 2.0	1.58	Indoor	SMD	600	3050	1715	1920	1080
iCon C165 2.0	1.91	Indoor	SMD	800	3660	2058	1920	1080
iCon C220 2.0	2.54	Indoor	SMD	1000	4880	2744	1920	1080
Modular - Indoor								
HC.09	0.9	Indoor	miniLED	600	600	337.5	640	360
Accliam A2712 Pro	1.2	Indoor	miniLED	600	610	343	480	270
Accliam A2715 Pro	1.5	Indoor	miniLED	600	610	343	384	216
Accliam A2712 Plus	1.2	Indoor	SMD	600	610	343	480	270
Accliam A2715 Plus	1.5	Indoor	SMD	600	610	343	384	216
Accliam A2719 Plus	1.9	Indoor	SMD	800	610	343	320	180
Accliam A2725 Plus	2.5	Indoor	SMD	1000	610	343	240	135
N1.8 Plus	1.8	Indoor	SMD	800	864	288	456	152
N2 Plus	2.4	Indoor	SMD	800	864	288	360	120
N3 Plus	3.2	Indoor	SMD	800	1440	288	450	90
N3D Plus	3.2	Indoor	SMD	2500	1440	288	450	90
N4 Plus	4	Indoor	SMD	800	1440	288	360	72
N4D Plus	4	Indoor	SMD	2500	1440	288	360	72
N5 Plus	5.14	Indoor	SMD	800	1440	288	280	56
N5D Plus	5	Indoor	SMD	2500	1440	288	280	56
K19 Plus	1.9	Indoor	SMD	700	500	1000	256	512
K2.5 Plus	2.5	Indoor	SMD	700	500	1000	200	400
K2.9 Plus	2.9	Indoor	SMD	700	500	1000	168	336
K2.9D Plus	2.9	Indoor	SMD	3000	500	1000	168	336
K3 Plus	3.9	Indoor	SMD	700	500	1000	128	256
K3D Plus	3.9	Indoor	SMD	3000	500	1000	128	256
LED Poster - Indoor								
AP2.4	2.4	Indoor	SMD	1000	576	1728	240	720
Rental								
Aries AX15	1.5	Indoor	MiniLED	800	610	343	384	216
Polaris PL25 Pro	2.5	Indoor	SMD	1200	500	500	200	200
Polaris PL3.9	3.9	Indoor	SMD	1000	500	500	128	128
Polaris PL3.9 XL	3.9	Indoor	SMD	1000	500	1000	128	256
Polaris PL3.9 Pro	3.9	Outdoor	SMD	5000	500	500	128	128
Polaris 3.9 Pro XL	3.9	Outdoor	SMD	4500	500	1000	128	256
Polaris PL4.8 Pro	4.8	Outdoor	SMD	4500	500	1000	104	104
polaris PL4.8 Pro XI	4.8	Outdoor	SMD	4500	500	1000	104	208
Modular - Outdoor								
AW2.8	2.8	Outdoor	SMD	5000	500	750	176	264
AW3.9	3.9	Outdoor	SMD	5000	500	750	128	192
XD4 Plus	4	Outdoor	SMD	5000	640	960	144	216
XD6 Plus	6	Outdoor	SMD	7500	640	960	96	144
XD8 Plus	6	Outdoor	SMD	7500	640	960	80	120
XD10 Plus	10	Outdoor	SMD	7500	640	960	64	96

Warranty - 3 year VDP warranty

All specifications are subject to change

Samsung LED is ultra slim, lightweight and comes with an industry first, advanced dynamic peaking technology which delivers high brightness and industry leading HDR video. The innovative HDR scene adaptation technology adds clarity and sophistication to featured content and provides a detailed and realistic picture.

SAMSUNG

Model	Pixel Pitch	Environment	LED Type	Brightness		Panel Width (mm)	Panel Height (mm)	Panel Resolution (H)	Panel Resolution (V)
				Peak/Max					
Fixed Size - Indoor									
130" All-in-One	1.5	Indoor	SMD	1200/600		2880	1620	1920	1080
Modular - Indoor									
IF012J-E	1.2	Indoor	SMD	800/500		806	453	640	360
IF015H-E	1.5	Indoor	SMD	1200/600		480	540	320	360
IF020H-E	2	Indoor	SMD	2000/1000		480	540	240	270
IF025H-E	2.5	Indoor	SMD	2000/1000		480	540	192	216
IE025R	2.5	Indoor	SMD	1200/600		960	540	384	216
IE040R	4	Indoor	SMD	1200/600		960	540	240	135
Curved - Indoor									
IE025R-F	2.5	Indoor	SMDSMD	1200/600		240	540	96	216
IE040R-F	4	Indoor		1200/600		240	540	60	135
The Wall - Pro									
IW008J	0.8	Indoor	MicroLED	1600/500		806	453	960	540
The Wall - Lux									
IW008R	0.8	Indoor	MicroLED	2000/250		806	453	960	540
Modular - Outdoor									
XPR060-E	6	Outdoor	SMD	7000		1000	1000	160	160
XPR080-E	8	Outdoor	SMD	7000		1000	1000	120	120
XPR100-E	10	Outdoor	SMD	7000		1000	1000	96	96

All specifications are subject to change

Warranty - 3 year Samsung warranty

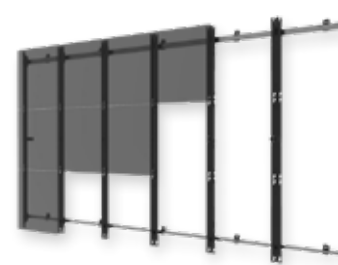
Present with impact on the 130 inch all-in-one reseller bundle

Contact your account manager for more information or to organise a demonstration.

Samsung 130" LED Display



Peerless LED Wall Mount



peerless-AV

AMX Conferencing Connectivity and Transport Kit



AMX
HARMAN

Experience Rooms

See how the technology will look in real life at our Experience Rooms in Ridderkerk. Our range of technologies are showcased in multiple areas that piece an entire solution together.

Contact your account manager to book a demo.

Large Format Displays

High End Displays

Projection

Small Format Displays

Commercial & Consumer TV

AV Solutions

Mounts & Accessories

LED is versatile

LED can be used in a wide range of applications, whether it's a permanent installation or a short-term rental. LED can deliver when it comes to indoor broadcast backdrop, an outdoor mega screen, even creative digital signage canvases, with curves or column wraps, as well as transparent-in-window.

Model	Pixel Pitch	Size	Resolution	Brightness (Nit)	Unit case Size	Package type	Warantee
Entry							
LSCB015-GK	1.5mm	136"	1920 x 1080	800	600x337.5x29.5	3 in 1 SMD	2Year
LSCB018-GK	1.8mm	163"	1920 x 1080	800	600x337.5x29.5	3 in 1 SMD	2Year
LSCB025-GK	2.5 mm	217"	1920 x 1080	800	600x337.5x29.5	3 in 1 SMD	2Year
Premium							
LSAA012MX	1.2 mm	108"	1920 x 1080	Peak 1,200 / Typ600	600 x 337.5 x 44.9	4 in 1 SMD	2Year
LAP015EL9N	1.5mm	130"	1920 x 1080	1000	480x540x53	3 in 1 SMD	2Year
LAP015EL9NP	1.5mm	130"	1920 x 1080	700	480x540x53	3 in 1 SMD	2Year
Premium Micro							
LSAB009-M1	0.94mm	163"	3840 x 2160	Peak 1,200 / Typ600	600 x 337.5 x 44.9	Chip On Board	2Year
LSAB009-M1	0.94mm	81"	1920 x 1080	Peak 1,200 / Typ600	600 x 337.5 x 44.9	Chip On Board	2Year
Standaard							
LAS009DB7	0.95mm	82"	1920 x 1080	600	604.8 x 340.2 x 72.5	3 in 1 SMD	2Year
LAS012DB9-F	1.2 mm	109"	1920 x 1080	600	604.8x340.2x72.5	3 in 1 SMD	2Year
LAS015DB9-F	1.5mm	137"	1920 x 1080	600	604.8x340.2x72.5	3 in 1 SMD	2Year
LAS018DB9-F	1.8mm	164"	1920 x 1080	600	604.8x340.2x72.5	3 in 1 SMD	2Year
LAS025DB9-F	2.5 mm	219"	1920 x 1080	600	604.8x340.2x72.5	3 in 1 SMD	2Year

All specifications are subject to change

Transparent LED Film

The LG Transparent LED film reflects the object behind the product even after the product is attached and turned off. This offers a wide-open view while blending into existing interior design smoothly and delivers various information effectively by attracting the attention of passersby.



LG LED Curve

Boasting detailed color and super contrast, LG's LAPE series brings content to life through freedom of design, giving it outstanding presence as a work of media art.



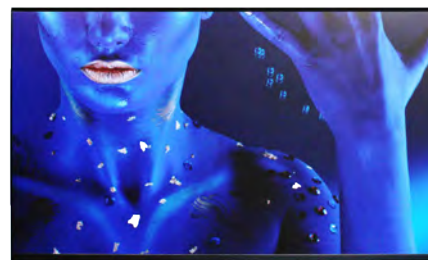
Whether standing an arms-length away or 40 feet from the display, NEC's direct view indoor LED displays provide crystal clear images for the ultimate bezel-free visual experience. Vivid high bright images are viewable in superb clarity from any viewing distance and angle to ensure your message is received with the greatest impact.

Model	Pixel Pitch	Screen Size	Environment	LED Type	Brightness		Panel Width (mm)	Panel Height (mm)	Panel Resolution (H)	Panel Resolution (V)
					Peak/Max					
Indoor All-in-One										
LED-A025i	2.5	N/A	Indoor	SMD	1000		572	1902	224	756
LED-A019i	1.944	N/A	Indoor	SMD	1000		572	1902	288	972
Indoor Modules										
LED-FE031i2	3.1	N/A	Indoor	SMD	1000		608	342	192	108
LED-FE019i2	1.9	N/A	Indoor	SMD	700		608	342	320	180
LED-FE025i2	2.5	N/A	Indoor	SMD	1000		608	342	240	135
LED-FE038i2	3.8	N/A	Indoor	SMD	1000		608	342	160	90
LED-FE012i2	1.2	N/A	Indoor	SMD	700		608	342	480	270
LED-FE015i2	1.5	N/A	Indoor	SMD	800		608	342	384	216
LED-FA015i2	1.5	N/A	Indoor	SMD	800		608	342	384	216
LED-FA012i2	1.2	N/A	Indoor	SMD	800		608	342	480	270
LED-FA019i2	1.9	N/A	Indoor	SMD	800		608	342	320	180
LED-FA025i2	2.5	N/A	Indoor	SMD	1200		608	342	240	135
LED-FA031i2	3.1	N/A	Indoor	SMD	1200		608	342	192	108
LED-FA31i2	3.8	N/A	Indoor	SMD	1200		608	342	192	108
Indoor Bundles										
LED-FA012i2-220	1266	220"	Indoor	SMD	800		4864	2856	3840	2160
LED-FE015i2-137	1583	137"	Indoor	SMD	700		3040	1830	1920	1080
LED-FE019-i2-110	1.9	110"	Indoor	SMD	700		2432	1488	1280	720
LED-FE012i2-110	1266	110"	Indoor	SMD	700		2432	1488	1920	1080
LED-FE019i2-165	1.9	165"	Indoor	SMD	700		3648	2172	1920	1080
LED-FE025i2-220*	2533	220"	Indoor	SMD	1000		4864	2856	1920	1080
LED-FE012i2-220	1266	220"	Indoor	SMD	700		4864	2856	3840	2160
LED-FA025i-220	2533	220"	Indoor	SMD	1200		4864	2856	1280	720
LED-FA019i2-110	1.9	110"	Indoor	SMD	800		2432	1488	1280	720
LED-FA019i2-165	1.9	165"	Indoor	SMD	800		3648	2172	1920	1080
LED-FA015i2-137	1583	137"	Indoor	SMD	800		3040	1830	1920	1080
LED-FA012i2-110	1266	110"	Indoor	SMD	800		2432	1488	1920	1080

All specifications are subject to change

Warranty - 3 year NEC warranty

LED-A025i All-in-One Solution



NEC LED-FA025i2-220 220" FullHD Bundle

Designed for mission critical applications, the NEC LED FA Series Bundles are fully redundant for zero downtime and equipped with Multi-Color LEDs for utmost quality

Videowall & image processing



Videowall controllers - VSN series



VSNMICRO600R

VSN1172R32

Suitable for a variety of different areas such as traffic control centres, telecom operations facilities, utility companies, security applications and in entertainment settings, the Datapath VSN series are capable of integrating many types of video and data sources onto any display configuration. Highly expandable and flexible, the VSN series uses Datapath's latest generation of video capture and graphics cards and is 4K60 4.4.4 capable.

Multi-display controllers



FX4HDR

The Datapath Fx4-HDR builds on the success of its award winning Fx4 and x4 predecessors and brings the superb HDR 10-bit colour clarity, 4K60 resolution as well as audio support into the mix.

The unrivalled 4K all-in-one controller



NovaPro UHD Jr

NovaPro UHD Jr is NovaStar's latest video controller, combining 4K processing and 4K sending into a simple all-in-one wonder of technology. With unrivalled processing abilities and excellent loading capacity, the Novapro UHD Jr brings an amazing viewing experience.

Independent Controller



MCTRL660 PRO

The MCTRL660 PRO is a professional controller developed by NovaStar. A single MCTRL660 PRO has a loading capacity of up to 1920x1200@60Hz. It supports custom resolutions with the width up to 3840 pixels and height up to 2560 pixels, which meets configuration requirement of ultra-large screens



Introducing Projection

So far 2020 has been bright for projection with the rising popularity of projection mapping, especially for events.

However, as well as the beautiful displays that projectors can create, they're still a staple in education environments, collaborative spaces as well as cinematic settings. All of our brands now provide laser options for their projections. Boasting a longer life, sharper image and higher brightness, laser projectors are an eco-friendly alternative to the standard lamp projector.

The use of interactive projectors is on the rise in both corporate and education environments. The interactive projection market was predicted to grow by 13.96% between 2018 and 2022¹. In tune with this, we've experienced an increase of 14.84% in the last year².

Another area we've noticed projection is gaining traction is in home cinemas. One driving force for this is the advancement of short throw technology. Now available in 4K, these projectors make any blank wall ideal for a home cinema, no matter how big the room is. With improved resolution and refresh rate, projectors are more frequently being used for gaming as well as home cinemas.



11%
increase in projectors sold that have more than 10,000 lumens²



14.84%
increase in interactive projectors sold²

Large Format Displays

High End Displays

Projection

Small Format Displays

Commercial & Consumer TV

AV Solutions

Mounts & Accessories

¹ <https://www.marketwatch.com/press-release/interactive-projectors-market-2020-global-industry-analysis-by-trends-size-share-company-overview-growth-and-forecast-by-2022-latest-research-report-by-360researchreportscom-2020-02-13>
² Based on Midwich and Square One sales from April 2019 to March 2020 compared to April 2018 to March 2019. Data taken 6.3.20, exclusions & omissions exempt.



From portable and professional to large venue projection solutions, NEC's portfolio of award-winning projectors will have a suitable projector for your customers. Combining high-quality Japanese components with a three-year warranty and low total cost of ownership, you'll get a hard-wearing projector with the reliability NEC is renowned for. T&Cs apply.

Reliable, crisp & quiet

Thanks to LCD technology, the ME382U delivers crisp images and natural colours to your classroom or meeting.



ME382U

Manufacturer Model No.	Model	brightness +/-		Native Resolution	Technology	Light Source	Throw Ratio	Lamp/ Light		Network		HDMI/		Warranty	
		ANSI Lumens	Resolution					Source Life	Wireless	RJ45	DVI	VGA	HDBaseT		RS232
M Series															
60003977	MH403H	4000	1080P	DLP	Lamp	1.2-2.1	800	Optional	Yes	1/0	1	No	Yes	3 Year + 6 Month (3 Year for Edu)	
60004705	MC342W	3400	XGA	LCD	Lamp	1.5-1.8	10000	Optional	Yes	2/0	1	No	Yes	3 Year + 6 Month (3 Year for Edu)	
60004704	MC332W	3300	WXGA	LCD	Lamp	1.5-1.8	10000	Optional	Yes	2/0	1	No	Yes	3 Year + 6 Month (3 Year for Edu)	
60004597	ME372W	3700	WXGA	LCD	Lamp	1.2-2.1	10000	Optional	Yes	2/0	1	No	Yes	3 Year + 6 Month (3 Year for Edu)	
60004598	ME382U	3800	WXGA	LCD	Lamp	1.2-2.1	10000	Optional	Yes	2/0	1	No	Yes	3 Year + 6 Month (3 Year for Edu)	
60004506	ME402X	4000	XGA	LCD	Lamp	1.32-2.2	10000	Optional	Yes	2/0	1	No	Yes	3 Year + 6 Month (3 Year for Edu)	

The MC and ME series comes with an even longer lamp life of 10,000 hrs in normal mode for smooth operation over a time period of over 9 years*. Thank to this improvement, you can enjoy lower maintenance saving you time and cost. Furthermore, with noise levels of only 29 dB in eco mode, there is no disturbance during your presentation.

(* at 8 hours operation a day, 200 days a year)

Powerful, silent and zero-maintenance

The NEC P605UL Entry Installation Series, LCD, laser projector combines advanced features at a budget conscious price making it ideal for higher education classrooms and corporate conference rooms.



P605UL

Put your large venue on the map with cinema quality pixel-free 4K projection

The PX1005QL has hassle-free installation, low TCO and a long life.



From portable and professional to large venue projection solutions, NEC's portfolio of award-winning projectors will have a suitable projector for your customers. Combining high-quality Japanese components with a three-year warranty and low total cost of ownership, you'll get a hard-wearing projector with the reliability NEC is renowned for. T&Cs apply.



Manufacturer Model No.	Model	brightness =/A	Native Reso	Technology	Light Source	Throw Ratio	Lamp/ Light S	Wireless	Network					Warranty
									RJ45	HDMI/E VGA	HDBaseT	RS232		
P series - fixed lens installation														
60004331	P603X	6000	XGA	LCD	Lamp	1.2-2.01	4000	Optional	Yes	2/0	1	Yes	Yes	3 Year + 6 Month
60004812	P506QL	5000	UHD	DLP	Laser	1.13-1.7	5000	Optional	Yes	2/0	1	Yes	Yes	3 Year + 6 Month
60004330	P554UL	5500	WXGA	LCD	Lamp	1.2-2.01	4000	Optional	Yes	2/0	1	Yes	Yes	3 Year + 6 Month
60004329	P554U	5500	WXGA	LCD	Lamp	1.2-2.01	4000	Optional	Yes	2/0	1	Yes	Yes	3 Year + 6 Month
60004913	PE455WL	4500	WXGA	LCD	Lamp	1.23-2.1	20000	Optional	Yes	2/0	1	Opt.	Yes	3-Year or 10,000 Hours
60004328	P525WL	5000	WXGA	LCD	Lamp	1.23-2.1	20000	Optional	Yes	2/0	1	Yes	Yes	3-Year or 10,000 Hours
60004912	PE455UL	4500	WXGA	LCD	Lamp	1.23-2.1	20000	Optional	Yes	2/0		Opt.	Yes	3-Year or 10,000 Hours
60004708	P525UL	5000	WXGA	LCD	Lamp	1.23-2.1	20000	Optional	Yes	2/0	1	Yes	Yes	3-Year or 10,000 Hours
60004811	P605UL	6000	WXGA	LCD	Lamp	1.23-2.1	20000	Optional	Yes	2/0	1	Yes	Yes	3-Year or 10,000 Hours
PA Series - Installation														
60004120	PA653U	6500	WXGA	LCD	Lamp	Optional Lens	3000	Optional	Yes	1/0	1	Yes	Yes	3 Year + 6 Month
60004080	PA703W	7000	WXGA	LCD	Lamp	Optional Lens	3000	Optional	Yes	1/0	1	Yes	Yes	3 Year + 6 Month
60004121	PA803U	8000	WXGA	LCD	Lamp	Optional Lens	3000	Optional	Yes	1/0	1	Yes	Yes	3 Year + 6 Month
60005035	PA804UL	8200	WXGA	LCD	Laser	Optional Lens	20000	Optional	Yes	2/0	1	Yes	Yes	3 Year + 6 Month
60004512	PA1004UL	9000	WXGA	LCD	Laser	Optional Lens	20000	Optional	Yes	2/0	1	Yes	Yes	3 Year + 6 Month
60004119	PA853W	8500	WXGA	LCD	Lamp	Optional Lens	3000	Optional	Yes	1/0	1	Yes	Yes	3 Year + 6 Month
60004118	PA903X	9000	XGA	LCD	Lamp	Optional Lens	2000	Optional	Yes	1/0	1	Yes	Yes	3 Year + 6 Month
60004921	PA703UL	7000	WXGA	LCD	Lamp	Optional Lens	20000	Optional	Yes	1/0	1	Yes	Yes	3 Year or 10,000 Hours
PX series - Installation (Panasonic Lens Support)														
60004009	PX803ULBK	8000	WXGA	DLP	Laser	Optional Lens	20000	Optional	Yes	1/0	1	Yes	Yes	3 Year or 10,000 Hours
60004010	PX803ULWH	8000	WXGA	DLP	Laser	Optional Lens	20000	Optional	Yes	1/0	1	Yes	Yes	3 Year or 10,000 Hours
60004511	PX2000UL	20000		DLP	RB Laser		20000							
60004235	PX1004ULBK	10000	WXGA	DLP	Laser	Optional Lens	20000	Optional	Yes	1/0	1	Yes	Yes	3 Year or 10,000 Hours
60004077	PX1004ULWH	10000	WXGA	DLP	Laser	Optional Lens	20000	Optional	Yes	1/0	1	Yes	Yes	3 Year or 10,000 Hours
60004489	PX1005QLBK	10000	4K UHD	DLP	Laser	Optional Lens	20000	Optional	Yes	2/0	N/A	Yes	Yes	3 Year or 10,000 Hours
60004490	PX1005QLWH	10000	4K UHD	DLP	Laser	Optional Lens	20000	Optional	Yes	2/0	N/A	Yes	Yes	3 Year or 10,000 Hours
PH Series - Installation														
60003902	PH1202HL	12000	WXGA	3-chip DLP	Laser	Optional Lens	20000	Optional	Yes	2/1	1	Yes	Yes	3 Year + 6 Month
60004622	PH3501QL	35000	4K UHD	3-chip DLP	Laser	Optional Lens	20000	Optional	Yes	2/2	N/A	Yes	Yes	3 Year or 10,000 Hours

Projection technology that reaches up to 20,000 lumens

With more consistent brightness, improved colour fidelity, and roll free capabilities these projectors will deliver in new verticals such as retail, simulation, and theme park installations.



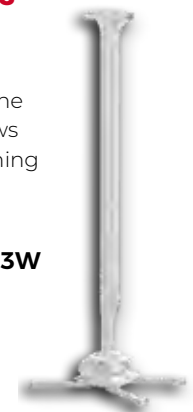
NEW PRODUCT

NECPX2000UL

Enjoy fast and precise adjustments

With everything you need for most projector installs, the KITMC8013W allows for precise positioning as well as easy servicing.

CHIEFKITMC8013W



NEC education exclusive extended warranties

Free 5 year extended warranty

Extend your standard 3 year warranty to 5 years or 10,000 hours (whichever comes first). Simply register within 6 weeks of purchase to be eligible for this offer.

Terms & conditions apply. Contact your account manager for more information.

Extended lamp guarantee

Take advantage of NEC's extended lamp guarantee for educational establishments. Available for selected models, registration extends the lamp guarantee period from its standard 6 months to 3 years.

Terms & conditions apply. Contact your account manager for more information.

Large Format Displays

High End Displays

Projection

Small Format Displays

Commercial & Consumer TV

AV Solutions

Mounts & Accessories



Introducing **Small Format Displays**

From the classroom to the office, from the medical centre to the gamer's den; small format displays have their place in almost every industry. Over 82% of jobs require at least a basic level of digital literacy¹ with the expectation for this to increase as almost every job will be affected by automation and AI².

With our largest small format display measuring 49", ultra-wide displays are increasingly more accessible. A year ago, our most popular display size was 22", now that number has grown to 24".

More and more monitors are adopting USB-C connectivity. Estimated to the standard connection by 2025³, USB-C is small and reversible, offers faster data transfer rates as well as power delivery. With built in USB-C, monitors no longer require additional docks and mobility will become far easier. With advancements in technology moving into just about every industry, the workplace is able to achieve more and increase productivity.

24"

most common display size



largest SFD we offer

¹ <https://www.burning-glass.com/research-project/uk-demand-digital-skills/>

² https://www.brookings.edu/wp-content/uploads/2019/01/2019_01_BrookingsMetro_Automation-AI_Report_Muro-Maxim-Whiton-FINAL-version.pdf

³ <https://insights.samsung.com/2019/03/06/usb-c-benefits-monitors-give-it-staff-extra-support/>

Designed with user comfort and reliability in mind, NEC's small format displays come in a range of sizes – but with a slim profile, they don't take up much space. Constructed from high-quality Japanese components – and with a 3-year manufacturer's warranty as standard – NEC monitors are designed to be durable and long-lasting. T&Cs apply.



Manufacturer Model No.	Model	Screen Size	Bezel Colour	Resolution	HDMI	DVI	VGA	Display			Warranty
								Port	Height	Speakers	
Small Format Displays											
60003810	AS242W	24"	Black	1920x1080	No	Yes	Yes	No	No	No	3 Year On-site
60003336	EA224WMI	22"	Black	1920x1080	Yes	Yes	Yes	Yes	Yes	Yes	3 Year On-site
60003860	PA243W	23"	White	1920x1080	No	Yes	Yes	Yes	Yes	No	3 Year On-site

Since 2004, ProDVX has been making the difference for their clients with valuable solutions. First and foremost, they do this by leading the way in product development and through a diverse and innovative product portfolio.



Manufacturer Model No.	Model	Screen Size	Bezel Colour	Resolution	Brightness	HDMI	DVI	VGA	Display			Warranty
									Port	Speakers		
X-Series												
APPC-7XPL	APPC-7XPL	7"	Black	1024x600	450	No	No	No	No	2x 2W	2 Years	
APPC-10X	APPC-10X	10.1"	Black	1280x800	500	No	No	No	No	2x 2W	2 Years	
APPC-10XP	APPC-10XP	10.1"	Black	1280x800	500	No	No	No	No	2x 2W	2 Years	
APPC-10XPL	APPC-10XPL	10.1"	Black	1280x800	500	No	No	No	No	2x 2W	2 Years	
APPC-15XP	APPC-15XP	15.6"	Black	1920x1080	300	No	No	No	No	2x 2W	2 Years	
APPX-22X	APPX-22X	21.5"	Black	1920x1080	250	No	No	No	No	2x 3W	2 Years	
APPX-22XP	APPX-22XP	21.5"	Black	1920x1080	250	No	No	No	No	2x 3W	2 Years	
APPX-24X	APPX-24X	23.6"	Black	1920x1080	250	No	No	No	No	2x 3W	2 Years	
APPX-27X	APPX-27X	27"	Black	1920x1080	300	No	No	No	No	2x 3W	2 Years	
APPC-32X	APPC-32X	31.5"	Black	1920x1080	400	No	No	No	No	2x 3W	2 Years	

Mimo specializes in small touchscreens that help simplify your life and maximize your potential at work. Ranging from 7-21 inches, Mimo prides themselves on innovative, high quality, and cutting-edge touchscreen technology designed to be inherently flexible to suit your needs, and bring your vision to life.



Manufacturer Model No.	Model	Screen Size	Bezel Colour	Resolution	Brightness	HDMI	DVI	VGA	Display			Warranty
									Port	Speakers		
Display with BrightSign built-in												
MBS-1080	MBS-1080	10.1"	Black	1280x800	350	No	No	No	No	No	3 Years	
MBS-1080-OF	MBS-1080-OF	10.1"	Black	1280x800	350	No	No	No	No	No	3 Years	
Outdoor												
MOT-2158H	MOT-2158H	21.5"	Black	1920x1080	1500	No	No	No	No	No	3 Years	
MOT-2158CH	MOT-2158CH	21.5"	Black	1920x1080	1500	No	No	No	No	No	3 Years	

Large Format Displays

High End Displays

Projection

Small Format Displays

Commercial & Consumer TV

AV Solutions

Mounts & Accessories



Introducing **Commercial & Consumer TV**

The demand for a cinematic experience in the home is only increasing. As technology advances and becomes more readily available, consumers are expecting bigger, better and smarter televisions. Just in the last year, we've witnessed a 23% increase¹ in the number of screens larger than 70" sold. This coincides with an increased demand for custom installations for the home.

However, it's not just about size. The uptake of 8K in residential applications is astounding. The spread of 8K technology is moving faster than even 4K and we now offer a 98" 8K screen.

Smart TVs have quickly become the standard for both commercial and consumer TVs. Allowing users to connect to stream movies and television shows, browse the internet and even have voice controls, today's Smart TV is getting even smarter. With increasing expectations for our everyday technology to become smarter, Smart TVs are now a staple in hotels and reception areas as well as the home.

Another area of growth area for the television market is the booming gaming market. As TVs are becoming more accessible, Gamers are now opting for larger screens as well as the lower input lag that newer TVs offer.

23%

increase in quantity of 70"+ Consumer TVs sold



98"
largest 8K TV we offer

¹ Based on Midwich and Square One sales from April 2019 to March 2020 compared to April 2018 to March 2019. Data taken 6.3.20, exclusions & omissions exempt.
² <https://ukie.org.uk/research>

SMART Hospitality Display

SMART Hospitality displays offer new and exciting approaches for hotels to delight and engage guests while improving their own operational efficiency.



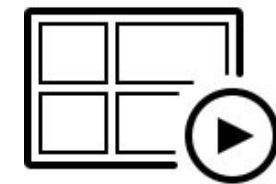
Seamless coaxial network integration

Through the platform's centralized, real-time monitoring, hotel managers can quickly deal with issues across single displays or display groups.



Personalized Guest Engagement

Deliver customized messages to guests relevant to details concerning their stay or interests.



Engaging welcome channels

Four simultaneous Welcome Video Channels that deliver details about the facility and promotions to guests.

SAMSUNG

Manufacturer Model No	Model	Screen Size	Resolution	Panel details	Digital Tuner	Commercial SMART App's	HDMI	VGA	USB	LAN/RJ45	RS232	Wi-Fi	Screen Mirroring	Web Browser	Hotel TV Soft AP Mode	VESA Mount	Warranty	Notes
HJ690 Range																		
HG75EJ690UBXXU	HG75EJ690	75"	4K UHD	LED	DVB-T2/C/S2	Yes	3	N/A	2	Yes	Yes	Yes	Yes	Yes	Yes	400x400	3 Year On-site	REACH, REACH IP
HG65EJ690UBXXU	HG65EJ690	65"	4K UHD	LED	DVB-T2/C/S2	Yes	3	N/A	2	Yes	Yes	Yes	Yes	Yes	Yes	200x200	3 Year On-site	REACH, REACH IP
HG55EJ690UBXXU	HG55EJ690	55"	4K UHD	LED	DVB-T2/C/S2	Yes	3	N/A	2	Yes	Yes	Yes	Yes	Yes	Yes	200x200	3 Year On-site	REACH, REACH IP
HG49EJ690UBXXU	HG49EJ690	49"	4K UHD	LED	DVB-T2/C/S2	Yes	3	N/A	2	Yes	Yes	Yes	Yes	Yes	Yes	100x100	3 Year On-site	REACH, REACH IP
HG43EJ690UBXXU	HG43EJ690	43"	4K UHD	LED	DVB-T2/C/S2	Yes	3	N/A	2	Yes	Yes	Yes	Yes	Yes	Yes	100x100	3 Year On-site	REACH, REACH IP
HF690 Range																		
HG32EF690DBXXU	HG32EF690	32"	FHD	LED	DVB-T2/C/S2	Yes	3	N/A	2	Yes	Yes	Yes	Yes	Yes	Yes	100x100	3 Year On-site	REACH, REACH IP
HE690 Range																		
HG24EE690DBXXU	HG24EE690	24"	HD	LED	DVB-T2/C/S2	Yes	2	N/A	1	Yes	Yes	Yes	Yes	Yes	Yes	75x75	3 Year On-site	REACH, REACH IP
HJ670 Range																		
HG55EJ670UBXXU	HG55EJ670	55"	4K UHD	LED	DVB-T2/C/S2	No	3	N/A	1	No	No	No	No	No	No	400x400	3 Year On-site	REACH
HG49EJ670UBXXU	HG49EJ670	49"	4K UHD	LED	DVB-T2/C/S2	No	3	N/A	1	No	No	No	No	No	No	200x200	3 Year On-site	REACH
HG43EJ670UBXXU	HG43EJ670	43"	4K UHD	LED	DVB-T2/C/S2	No	3	N/A	1	No	No	No	No	No	No	200x200	3 Year On-site	REACH
HE590 Range																		
HG40EE590SKXXU	HG40EE590	40"	FHD	LED	DVB-T/C/S2	Yes	2	N/A	1	Yes	Yes	Yes	Yes	Yes	Yes	200x200	3 Year On-site	REACH, REACH IP
HG32EE590FKXXU	HG32EE590	32"	HD	LED	DVB-T/C/S2	Yes	1	N/A	1	Yes	Yes	Yes	Yes	Yes	Yes	100x100	3 Year On-site	REACH, REACH IP
HJ470 Range																		
HG43EJ470MKXXU	HG43EJ470	43"	FHD	LED	DVB-T2C	No	2	1	1	No	Yes	No	No	No	No	200x200	3 Year On-site	REACH
HG40EJ470MKXXU	HG40EJ470	40"	FHD	LED	DVB-T2C	No	2	1	1	No	Yes	No	No	No	No	200x200	3 Year On-site	REACH
HG32EJ470NKXXU	HG32EJ470	32"	HD	LED	DVB-T2C	No	2	1	1	No	Yes	No	No	No	No	10x100	3 Year On-site	REACH
Hospitality Solutions																		
BW-LRNE01A	*** LYNK REACH 4.0 (IP Mode) (Third Party Server and IPTV Gateway Required at Head-head) ***																	
CY-HDS02A/XC	*** LYNK REACH Server - COAX Distribution Only ***																	

Do you need a wall mount?
 Choose the perfect mount to accompany the new television.
 Head to page 41.

Enable guests to enjoy the comforts

Brilliant UHD picture quality and convenient room management. Samsung's HJ690U displays enable premium hotel operators to meet guests' rising expectations while improving their own efficiency.



HG65EJ690

SAMSUNG

Our range of Samsung TVs offer something for every home. Ranging from 32" to 98", with curved, flat, Smart and 4K options available, your customers will find something for every room.

Be immersed in a billion shades of colour

Samsung's QLED is able to transform light into breath-taking colour without degradation over time.



QE65Q60R



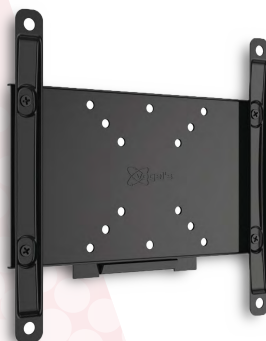
QE75Q60R

Make the smarter choice

Relax with a TV that adapts to give you the very best 4K picture, targeted sound and personalised TV recommendations.

The ideal solution for the largest TVs

Finished in a satin black powder coat, this universal flat to wall mount is the perfect choice for your larger TVs.



PFW 4200

Manufacturer Model No.	Model	Screen Size	4K	Smart Function	HDMI	USB
LED						
UE43RU7100KXXN	UE43RU7100	43"	Yes	Yes	3	2
UE50RU7100KXXN	UE50RU7100	50"	Yes	Yes	3	2
UE55RU7100KXXN	UE55RU7100	55"	Yes	Yes	3	2
UE58RU7100KXXN	UE58RU7100	58"	Yes	Yes	3	2
UE65RU7100KXXN	UE65RU7100	65"	Yes	Yes	3	2
UE75RU7100KXXN	UE75RU7100	75"	Yes	Yes	3	2
UE43RU7400UXXN	UE43RU7400	43"	Yes	Yes	3	2
UE50RU7400UXXN	UE50RU7400	50"	Yes	Yes	3	2
UE55RU7400UXXN	UE55RU7400	55"	Yes	Yes	3	2
UE65RU7400UXXN	UE65RU7400	65"	Yes	Yes	3	2
UE49RU8000TXXN	UE49RU8000	49"	Yes	Yes	4	2
UE55RU8000TXXN	UE55RU8000	55"	Yes	Yes	4	2
UE65RU8000TXXN	UE65RU8000	65"	Yes	Yes	4	2
UE82RU8000TXXN	UE82RU8000	82"	Yes	Yes	4	2
QLED						
QE43Q60RATXXN	QE43Q60R	43"	Yes	Yes	4	2
QE49Q60RATXXN	QE49Q60R	49"	Yes	Yes	4	2
QE55Q60RATXXN	QE55Q60R	55"	Yes	Yes	4	2
QE65Q60RATXXN	QE65Q60R	65"	Yes	Yes	4	2
QE75Q60RATXXN	QE75Q60R	75"	Yes	Yes	4	2
QE82Q60RATXXN	QE82Q60R	82"	Yes	Yes	4	2
QE49Q70RATXXN	QE49Q70R	49"	Yes	Yes	4	2
QE55Q70RATXXN	QE55Q70R	55"	Yes	Yes	4	2
QE65Q70RATXXN	QE65Q70R	65"	Yes	Yes	4	2
QE75Q60RATXXN	QE75Q60R	75"	Yes	Yes	4	2
QE82Q60RATXXN	QE82Q60R	82"	Yes	Yes	4	2
QE55Q80RATXXN	QE55Q80R	55"	Yes	Yes	4	2
QE65Q80RATXXN	QE65Q80R	65"	Yes	Yes	4	2
QE55Q90RATXXN	QE55Q90R	55"	Yes	Yes	4	2
QE65Q90RATXXN	QE65Q90R	65"	Yes	Yes	4	2
QE75Q90RATXXN	QE75Q90R	75"	Yes	Yes	4	2
QE65Q950RBTXXN	QE65Q950R	65"	Yes	Yes	4	2
QE75Q950RBTXXN	QE75Q950R	75"	Yes	Yes	4	2
QE82Q950RBTXXN	QE82Q950R	82"	Yes	Yes	4	2
QE98Q950RBTXXN	QE98Q950R	98"	Yes	Yes	4	2

Do you want sound to match the image quality?

Check out our audio section on page 37.



Introducing **AV Solutions**

We have a diverse portfolio of AV Solutions technology, and specialist staff to accompany them. Our offering includes Connectivity, Networking, IPTV, Video and Image Processing, Digital Signage, AV over IP and more.

Unified Communications and Collaboration is a particular area of growth due to the mobility of workers and the globalisation of businesses². Being able to collaborate from a distance allows businesses to provide flexibility for their staff. This is especially important as the remote workforce is expected to grow to 50% during 2020³. As well as remote collaboration, being able to collaborate in classrooms and meeting rooms is equally as important. We've experienced a 42% growth in wireless collaboration technology¹ and expect this area to grow as people look to boost productivity and depth of learning that this intuitive technology allows.

We've recently expanded our AV over IP product offering as the uptake of this technology grows. Hailed as a revolutionary innovation, AV over IP technology allows large amounts of data to be transferred quickly and to a huge number of outputs.

As an added extra, Mi Support is available on all our AV solution products, offering all-in-one aftercare. This is a trade resaleable warranty and gives you access to Mi Support Warranty, Mi Support Training and the Mi Support Helpdesk. For a more comprehensive overview of the AV solutions that we offer, check out our Technical Audio Visual Solutions Guide.



42%
growth in wireless
collaboration
technology¹

¹ Based on Midwich and Square One sales from April 2019 to March 2020 compared to April 2018 to March 2019. Data taken 6.3.20, exclusions & omissions exempt.
² <https://www.uctoday.com/unified-communications/ucaas/ucaas-trends-2020-round-table-whats-next-for-ucaas/>
³ <https://www.hso.co.uk/leased-lines/technology-news/homeworking-news/50-of-uk-workforce-to-work-remotely-by-2020>

Engineered for ProAV, driven by reliability and performance.

Discover the advantages of choosing
an AV over IP solution compared to
traditional AV matrix switching.

NETGEAR®
BUSINESS



For more info contact your van Domburg Account Manager





Conferencing connectivity and transport kit



CTC-1402
AMXFC1010-910

The AMX CTC-1402 was created to target web conferencing solutions where cameras, microphones, and other USB devices are installed in the room. The solution combines multi-format 4K60 4:4:4 video switching, scaling, and distance transport with USB 2.0 peripheral switching.

Digital video presentation switcher



NCITE-813AC
AMXFC1901-16

AMX Incite Digital Video Presentation Systems are the next generation of presentation switchers that combine AMX control and signal distribution with HARMAN Crown, JBL, and dbx audio.

Extend the beauty of 4K with breathtaking detail and image quality using the AMX SVSI Networked AV solution



NMX-ENC-2412A
AMXFCN2412A-SA

4K provides four times the resolution of 1080p Full HD for breathtaking detail and image quality. Our N2400 4K60 4:4:4 encoders and decoders support streaming video resolutions up to 4096x2160 and support HDCP 2.2; all with latency so low it supports extremely sensitive applications like live action events and interactive presentations using a keyboard and mouse. This range is feature rich with distribution over a 1GB Network, AES67 digital audio support, power-over-Ethernet, KVM support and 802.1x authentication.



NMX-DEC-2422A
AMXFCN2422A-SA

All-In-One Presentation Switcher



DVX-2265-4K

The AMX Enova® DVX-2265-4K 6x2+1 All-In-One Presentation Switcher is a unified audio, video, and control device that replaces the need for numerous individual components and eliminates the integration and reliability challenges that accompany them.

Presentation Switcher



VPX-1401

The AMX VPX-1401 is a simple but powerful 4x1 scaling presentation switcher that targets small conference rooms and classrooms. The VPX-1401 supports resolutions up to 4K60 4:4:4, and offers HDCP 2.2 compatibility to support the most current sources and displays.

Signage & IPTV



Flexible, cost effective and feature-rich



TPSBUNDLEIPTVSIGN

Tripleplay is the world's most innovative and mature single-platform IPTV and Digital Signage solution, delivering professional, secure and quality media content from a wide variety of sources across IP networks to a varied end-point range.

<https://www.tripleplay.tv/tripleplay-sales-overview-videos/>



AOPEN's Digital Engines can be used as an integrated solution



DE3250

This two output media has a fanless design and the solid-state disk. Furthermore, it doesn't have venting holes. This makes the DE3250 perfect for use in rugged environments or vehicles

BrightSign®

For a no compromise, immersive digital signage experience



BSXT1144

The XT1144 has the video and graphics processing power for a no compromise, immersive digital signage experience.

Capture attention with frame-accurate synchronisation across a multitude of screens



BSXD224

Enjoy flawless 4K and Full HD single video decoding, mainstream HTML5 performance and simultaneous playback from local, networked and streaming sources.

Discover more about digital signage



SCAN ME!



Ideal for small meeting rooms and huddle spaces



99950707001

The HuddleSHOT All-in-One Conferencing Camera with integrated audio is designed especially for huddle spaces. It's the ideal camera solution for video collaboration sessions because its ultra-wide 125° horizontal FOV gets everyone in the picture, even in the smallest areas.

Simple and powerful bundle for medium sized videoconferencing rooms

99999950201

ConferenceSHOT AV integrates a 10X zoom PTZ camera and audio conferencing mixer into a single USB 3.0 device, so you can easily connect microphone and external speaker to the camera. The CeilingMIC 2 Bundle is easy to install and allows simple plug and play functionality with all major UCC soft clients such as Skype for Business, WebEx and Google.



Meeting Space Collaboration System



ACENDOCORE

Delivering a flawless start to any meeting, Acendo Core enables vast web conferencing platform support including one-click Skype for Business and Zoom meeting launch, wireless document sharing, web browsing, and access to content from network drives, and a variety of scheduling functions including booking the room, extending the meeting, and browsing / scheduling nearby rooms.

Supporting the high standards of today's workforce



ACENDOVIBE4151B

The Acendo Vibe 5100 is an expertly designed web conferencing sound bar with integrated camera. Featuring Sound by JBL, integrated connectivity that a professional environment requires, and a look that holds up to modern workspace architecture, Acendo Vibe supports the high standards of today's workforce.

All-in-one Zoom Rooms Appliance

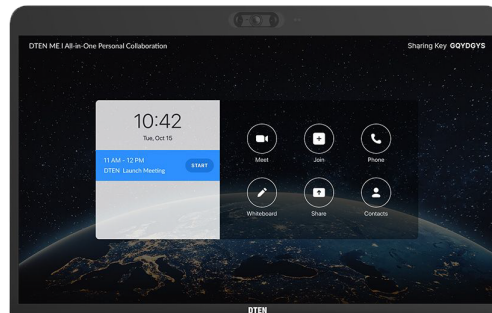


DTEN ON

A single device for videoconferencing, whiteboarding and sharing documents. Leading tech like 4K display panels, 16-array microphones, up to 120-degree camera angle. Sophisticated DSP sound technology and periodic AI updates. Everything you need in the box, light-weight, set-up in minutes.

Perfect for your Home Office

DTEN ME

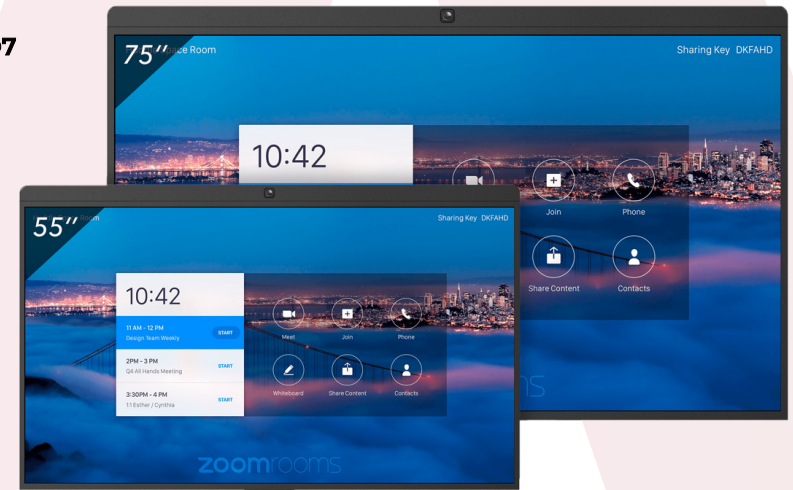


Zoom for Home - DTEN ME is an all-in-one personal collaboration device for your home office.

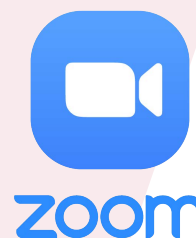
- Connect remotely with teams
- Real immersive in-office experience
- The professional meeting experience from home

All-in-one plug and play video conferencing solution

DTEN D7 D7



Complete with all core components for a seamless Zoom Rooms for Touch experience. Easily set-up and start your meetings in about 15 minutes right out of the box, no technician. Cutting-edge collaboration solution for any meeting space at a budget-friendly rate.



Zoom is the leader in modern enterprise video communications. It is a cloud-based video communications app that allows you to set up virtual video and audio conferencing, webinars, live chats, screen-sharing, and other collaborative capabilities.

You don't need an account to attend a Zoom meeting, and the platform is compatible with Mac, Windows, Linux, iOS, and Android, meaning nearly anyone can access it.

Room booking



Optimise the use of your meeting rooms



SIG.002.3

Use interactive signage to visualize your bookings. In combination with smart touch displays, you give instant insight into the availability and status of your space. Your employees can easily create a new reservation or check in directly.

Acendo Book Panel FG5969-55BL

Ideal for businesses of all sizes, the Acendo Book 7" Touch Panel integrates directly with popular room scheduling software like Microsoft Exchange, Office 365, and Google Calendar without additional system hardware requirements.



Take control of your meeting rooms



Reserva-15T-W

Reserva is an intuitive meeting room signage solution with support for market leading calendar and timetabling systems used in corporate, education and hospitality industries

Acendo Book Panel FG5969-49BL

Optimise room utilisation by implementing the second-generation Acendo Book 10" Touch Panel. It integrates directly with popular room scheduling software, and features a Quad-Core processor and low profile design.



Solstice Gen3



The Ultimate Wireless Collaboration Platform



Wireless Collaboration

High performance wireless content sharing from simultaneous users on any device



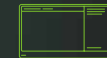
Conferencing Integration

Use any conferencing service to extend the Solstice experience to remote participants



Active Learning

Software-based solution for designing and routing video within multi-screen environments



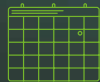
Digital Signage

Play HTML-based signage content when Solstice-enabled displays are not being used



App-free sharing

Alternative sharing options for guests and users who are unable to download the Solstice app



Cloud-based management

Secure web-based portal that offers complete control of global Solstice deployments



Enterprise-grade Security

Built from the ground up with security, stability, and data integrity as top priorities



Third-party integrations

Easily integrates with existing AV and IT systems to maximize return on investment



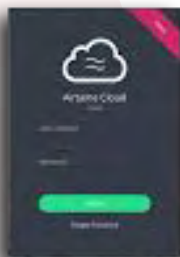
Making screens smarter



AT-DG2

Wireless presentations from any device, digital signage for all screens, and all-in-one cloud management. It's just smarter.

Take control of your screens



AT-CLOUD-PLUS-1

Engage audiences with digital signage and empower administrators with device management. All from one central place.

See for yourself?

Demo units are available, please contact our sales department for more information.

sales@vandomburg.nu

Maximise the potential of your meeting spaces



SP-8100-E5-AL

Mersive Solstice 4.4 along with our Gen 3 hardware platform takes meeting collaboration to new heights. Whether your meeting participants are in the room, connected via VC, or both, this award winning ("Best in Show" at ISE 2020) technology includes features that enhance engagement, encourage collaboration & increase productivity when sharing content. Contact the Midwich CTS Team to arrange a demonstration.

Solstice Conference



Solstice Conference seamlessly integrates Solstice's intuitive, high-performance wireless content sharing with any video conferencing service to deliver a unified collaboration experience for both local and remote participants.



Introducing

Professional Audio Solutions

Too often audio has been an afterthought for an installation. Now, however, end-users are demanding crystal-clear audio and easy to use, intuitive technology. From assisted listening and amplifiers to controllers and conference systems; we've noticed this change in attitude across our entire audio portfolio.

One area where audio has particularly grown is in office and conference environments. We've witnessed a 10% growth in conference systems over the last year¹ as well as a 26.65% growth in the sale of soundbars¹. A lot of these systems are now offering 360-degree audio coverage which is quickly becoming an industry standard².

Publishing content in audio format is increasingly becoming more popular. Although podcasts are a driving force for this, news producers are also embracing this format as it allows them to reach a more diverse and mobile audience. If you're unsure of the best option for your install, our specialist audio team are here to help. Whether it's advice on the latest products or an end-to-end solution, our highly trained experts will provide you with guidance to save you time and money.

Also at your disposal, we have our 4,000 square foot professional audio and lighting demo facility which provides an ideal environment for installers, consultants, resellers and hire companies to listen to a comprehensive selection of our specialist audio product portfolio. Demonstrating solutions for live events, stadiums and theatres through to the corporate offering, the professional audio and lighting demo facility has a wealth of knowledge to assist you and your end-user.



10%
growth in
conference systems¹



26.65%
revenue growth
in soundbars

Specialist audio solutions

With a history of innovation that began in 1925, Shure has turned a passion for making great microphones and audio electronics into an obsession. Shure continues to set the worldwide industry standard for superior, reliable products.



Conferencing Solutions

The Microflex® Advance™ MXA910 Ceiling Array Microphone



MXA910

Harmonious integration leads to more open discussion. An elegant approach to conferencing audio, the MXA910 eliminates all equipment clutter, leaving more room for clarity. Instead of focusing on a microphone's position, you can concentrate on compelling communication.

Linear Array Microphone



MXA710

The MXA710 Linear Array Microphone represents the next evolution in Shure array microphone technology, designed for high-quality audio capture in premium AV conferencing environments. The sleek, linear form factor of the MXA710 allows for placement virtually anywhere in a meeting space, including on a wall, around a display, ceiling, or into a conference room table. Available in two lengths and three colors, the MXA710 includes proprietary Shure IntelliMix® DSP and Autofocus™ technology that provides all the processing needed for echo and noise-free conference audio.

The Microflex® Advance™ MXA310 Table Array Microphone



MXA310

Organisational clarity takes focused discussion. But how can you conference effectively, if you can't be heard clearly on the call? The MXA310 maximises audio quality, so voice comes through clean — making purpose clear.

IntelliMix® P300 Audio Conferencing Processor



P300

The IntelliMix® P300 enhances every aspect of conference audio. Combined with Microflex® Advance™ or Microflex® Wireless microphones, clean, clear sound reproduction and intelligent mixing keeps the agenda on track with clear communication.

ANIUSB-MATRIX USB Audio Network Interface with Matrix Mixing



ANIUSB_MATRIX

Audio network interface connects up to 4 Dante channels and 1 analog output to a room's audio and video conferencing system via USB connection. Internal matrix mixer offers flexible routing, allowing users to route any input to any output.

Networked Loudspeaker



MXN5W-C

Provides high-quality speech reproduction for AV conferencing applications. PoE-enabled with a low-profile design optimized for easy installation in drop ceiling configurations.

Network Button



MXA-MUTE

Configurable PoE-powered mute button accessory designed for Shure networked audio products



Studio-quality sound for your home office



MV5C

Video conferencing and working from home are the new normal. Make sure you sound professional and are heard clearly during important pitches, presentations and proposals with the MV5C Home Office Microphone. The MV5C can be used with or without headphones. Simply plug it in with the supplied cables to a Mac or Windows computer and join your virtual meetings with the confidence that you sound just as good at home as you do in the boardroom. Compatible with third-party software conferencing platforms including Zoom and Microsoft Teams.

Digital Wireless System

From lecture halls to houses of worship to performance venues, SLX-D delivers transparent, 24-bit digital audio and rock solid RF performance with easy setup and rechargeability options in a suite of versatile wireless system configurations.

SLX-D



BLX® Wireless System

When performance is freed from its wires, it can go to exciting places. But noise and dropouts can stop it cold. BLX® Wireless makes it simple to get great sound out of a dependable wireless system. And when you can go wireless without worry, you can perform without limits.



The Icons



SUPER55



SM58

Microflex® Complete Wireless Digital Conf. System

Microflex® Complete Wireless keeps up with the constantly changing demands of conferences without invasive installs and without the limits of wired systems.



Microflex® Wired Microphones

Speech comes in many forms. Sermons, rallies, keynotes: the list goes on. We've captured hearts and minds with our voices since we first learned to speak — limited only by imagination and amplification. Microflex® microphones ensure that what you share will always be heard.



MX405

Specialist audio solutions



Cost-effective, commercial-grade active soundbar



PSB-1 Pro Soundbar

The JBL Pro SoundBar is an active soundbar designed specifically for commercial applications. It has an optimised feature set to address the unique requirements of hotel guest rooms, cruise ship staterooms and other commercial environments. Supporting both fixed and variable source volume and providing compatibility with fixed applications (where the volume is controlled at the soundbar) and variable applications (where gain is controlled at the television).



Designed and built for installed sound applications



CDI Drivecore series

The Crown CDi DriveCore Series is a cost-effective and energy-efficient install amplifier solution featuring high channel density, professional features and exceptional reliability. Ideal for powering HARMAN's JBL loudspeakers.

A powerful, pure sound experience for any venue



XLS series

With a sleek new look, larger LCD display, and more signal processing, the XLS DriveCore 2 Series offers high-performance and energy-efficient amplification for installation and portable live sound.



Boundary Layer Microphones



CBL201



CB301

The new CBL Series by AKG is a family of low-profile boundary layer microphones specifically for applications such as conference rooms and meeting spaces. Accommodating critical applications including conference rooms and meeting spaces. Featuring intuitive user controls for talk/mute, elegant design aesthetics with LEDs, and screw terminals for mics and I/O, the CBL Series is easy to install, easy to use, easy on the eyes and makes meetings sound great.



Ethernet controller with 8 buttons for control

EC wall controllers



The Soundweb Contrio EC-8BV is an Ethernet wall controller for use in Harman HiQnet systems. This can control and monitor parameters within BSS Audio Soundweb London and other HiQnet devices, including Crown DCi series amplifiers.

Audio routing and signal processing



BLU-50 / BLU-100

Offering affordable and easily installed audio routing and signal processing, the BSS Soundweb BLU-50 and BLU-100 fixed I/O devices offer audio transfer over HARMAN's BLU-Link fault tolerant digital bus using standard Cat5e cable.



Outstanding intelligibility in high ceiling spaces



Control 60 Series pendant speakers

Solving the challenge of delivering high quality, controlled audio in spaces with high ceilings, this range of JBL pendant speakers are available in multiple sizes to suit many applications from restaurants and bars, to education and retail spaces.

JBL CBT Series column line-array loudspeakers

The JBL CBT range excels in offering exceptional - and affordable - solutions for reverberant spaces such as lecture theatres, concourses, houses of worship, transport hubs and any other tricky acoustic spaces where intelligibility would otherwise be an issue.



CBT 50LA-1

Compact in-ceiling speakers



Control 24 & Control 26 ceiling speakers

The Control 24CT Micro and Control 26 are compact in-ceiling speakers, providing full high-quality sound for background music or announcement systems. They offer a discreet yet professional solution for a wide variety of applications, providing consistent dispersion and therefore even coverage throughout the space.

All-in-one portable rechargeable PA system

The EON One Pro is an all-in-one compact portable PA system featuring a built-in mixer and rechargeable battery. It delivers astonishing and powerful sound and is ideal as a utility PA in applications as diverse as corporate events to use in schools.



EON One Pro

Compact surface mount speakers



Control 23-1, 25-1 & 28-1 surface mount speakers

These 3", 5" and 8" on-wall speakers feature rich sonic character, wide and consistent coverage, versatile mounting, and a contemporary yet discreet look. All models are also available in white.

All-in-one rechargeable personal PA

The EON ONE Compact packs a professional speaker, a full-featured 4-channel mixer and Bluetooth control into JBL's most compact battery-powered PA, weighing in at just 8kg. Presenters and fitness instructors will appreciate EON ONE Compact's ducking feature, which lowers background music volume anytime you speak to ensure your audience hears every word, loud and clear.



EON One Compact



Large Format Displays

High End Displays

Projection

Small Format Displays

Commercial & Consumer TV

AV Solutions

Mounts & Accessories

Introducing **Mounts & Accessories**

As the AV industry grows, having the right mounts and accessories to go with them becomes increasingly important. With new innovations in the mounts industry, small to large displays, televisions, projectors and audio equipment are able to be seamlessly integrated into any environment.

With the growth in videowall displays, our brands are continually developing new designs that allow for easier installation as well as servicing. Despite the challenges faced by such small bezels, we now offer solutions that will protect your display as well as making it accessible.

Provide your end-user with the whole solution including cables and computer accessories. With heightened demands of technology in the workplace, having the right cable solutions allow for faster data transfer, clarity of images and sounds, and flexibility.

Workplaces are also calling for improvements in the ergonomics of their technology. From height adjustable monitor arms to the popular sit-stand workstation, improving employee wellbeing has been shown to drastically increase productivity rates.



11%
increase in cables sold¹



17.7%
growth for the cables & connectors division¹



11%
growth in the AV & IT accessories division¹

¹ Based on Midwich and Square One sales from April 2019 to March 2020 compared to April 2018 to March 2019. Data taken 6.3.20, exclusions & omissions exempt.



Committed to delivering high-quality, easy-to-install products for more than 40 years, Chief is globally recognised as an AV industry leader. Chief has a number of relationships with audio-visual partners, such as Microsoft® and LG®. Whether it's a custom mount for a specific product or a whole private-label line of mounts, Chief has the knowledge and experience to get the job done.

Enjoy new features such as Centreless shift and ControlZone leveling adjustment

Chief upgraded their fixed wall mounts based on installer feedback and the new benefits now include added stability, faster install, improved lateral shift, easier cable management and enhanced security.



LSM1U

Eliminate the need for wall inspections

The Tempo™ Flat Panel Floor Support System uses the floor instead of the wall to support displays. Customise the bottom panel to match existing decor and create an aesthetic solution for any environment.



AVSFSS

Support the devices and components that accompany displays

This component storage panel supports devices and components near displays – either on-wall or attached to Fusion mount extrusions. Slide-out feature improves ease of access to components.



CSSMP15X10

Model number	Model name	Mount type	Fitment size	Max weight	Max VESA	Colour	Pole length
Fusion Wall Mounts							
MSM1U	MSM1U	Flat	32-47"	56.7 kg	640x400	Black	N/A
MSA1U	MSA1U	Flat	32-47"	56.7 kg	640x400	Black	N/A
LSM1U	LSM1U	Flat	37-63"	90.7 kg	870x500	Black	N/A
LSA1U	LSA1U	Flat	37-63"	90.7 kg	870x500	Black	N/A
XSM1U	XSM1U	Flat	55-82"	113.4 kg	1070x600	Black	N/A
MTM1U	MTM1U	Tilt	32-47"	56.7 kg	600x400	Black	N/A
MTA1U	MTA1U	Tilt	32-47"	56.7 kg	640x400	Black	N/A
LTM1U	LTM1U	Tilt	37-63"	90.7 kg	870x500	Black	N/A
LTA1U	LTA1U	Tilt	37-63"	90.7 kg	870x500	Black	N/A
XTM1U	XTM1U	Tilt	55-82"	113.4 kg	1080x600	Black	N/A
TSS25TU	TSS25TU	Articulating	37-58"	56.7 kg	800x400	Black	N/A
TS325TU	TS325TU	Articulating	26-52"	34.0 kg	600x400	Black	N/A
TS318SU	TS318SU	Articulating	26-52"	34.0 kg	600x400	Black	N/A
MSDIU	MSDIU	Height Adjustable	Up to 65"	31-60 kg	800x400	Black	N/A
LSDIU	LSDIU	Height Adjustable	Up to 90"	57-80 kg	800x400	Black	N/A
PSMH2860 (Strech mount)	PSMH2860 (Strech mount)	Flat	86"	34 kg	600x200	Black	N/A
Trolleys and stands							
MPAU	MPAU	Trolley	37-55"	56.7 kg	600x400	Black	N/A
MFAU	MFAU	Floor Stand	37-55"	56.7 kg	600x400	Black	N/A
LFAU	LFAU	Floor Stand	40-80"	90.7 kg	800x400	Black	N/A
XPA1U	XPA1U	Trolley	55-100+*	136.1 kg	800x400	Black	N/A
XVAUB	XVAUB	Trolley	37-70"	113.4 kg	800x400	Black	N/A
PFCUB	PFCUB	Trolley	42-71"	90.7 kg	862x517	Black	N/A
PFIUB	PFIUB	Floor Stand	41-71"	90.7 kg	862x517	Black	N/A
MFCUB	MFCUB	Trolley	30-55"	56.7 kg	709x431	Black	N/A
MFIUB	MFIUB	Floor Stand	30-55"	56.7 kg	709x431	Black	N/A
MPDIU	MPDIU	Trolley	Up to 65"	30-59 kg	800x400	Black	N/A
LPDIU	LPDIU	Trolley	Up to 90"	56-79 kg	800x400	Black	N/A
PRSU	PRSU	Floor Stand		90.7 kg	860x510	Black	N/A
XPDIU-UK	XPDIU-UK	Electric Height Adjustable Trolley	50-80"	140.6 kg	860x510	Black	N/A
LDS1U	LDS1U	Table Top Stand	46-70"	56.7 kg	600x400	Black	N/A
Videowall							
LSM1U*FCAV1U	LSM1U*FCAV1U	Videowall	37-63"	68 kg	880x400	Black	N/A
MSM1U*FCAV1U	MSM1U*FCAV1U	Videowall	32-47"	68 kg	650x400	Black	N/A
LVS1U	LVS1U	Videowall	42-80"	68 kg	700x400	Black	N/A
FRA	FRA	Rotation Adapter	40-55"	56.7 kg	400x400	Black	N/A
Outdoor Mounts							
ODMLT	ODMLT	Tilt	32-80"	79.3 kg	643x430	Black	N/A
ODMLA25	ODMLA25	Articulating	32-80"	68 kg	709x444	Black	N/A
Suspended ceiling							
SYSAUW	SYSAUW	Ceiling Kit	N/A	159 kg	N/A	White	0-304.8 mm
KITM Z006S	KITM Z006S	Ceiling Kit	N/A	11.3 kg	N/A	Silver	N/A
Projector Mounts							
KITM C030045	KITM C030045	Ceiling	N/A	22 kg	N/A	Black	30-45cm adj kit
KITM C045080	KITM C045080	Ceiling	N/A	22 kg	N/A	Black	45-80 cm adj kit
KITM C080135	KITM C080135	Ceiling	N/A	22 kg	N/A	Black	80-135 cm adj kit
RPMAU	RPMAU	Projector	N/A	22.7 kg	N/A	Black	N/A
RPAU	RPAU	Projector	N/A	22.7 kg	N/A	Black	N/A
RSAUS	RSAUS	Projector	N/A	11.3 kg	N/A	Black	N/A
VCMU	VCMU	Projector	N/A	113.4 kg	N/A	Black	N/A



Vogel's stands out from the competition by its unique and timeless design. It is no surprise that Vogel's continues to win design awards all over the world and of course the beautiful design is combined with very sophisticated functionality. A complete range of mounting-solutions for both projectors and flat panel displays. From simple to advanced. From static to electronically operated. Vogel's has a solution for every AV mounting application; A one-stop shop.

Rotate your display 360° with Vogel's display ceiling mounts

The Vogel's PUC 24 Series is a complete range of display ceiling mounts. This series enables you to safely and quickly mount your display (up to 40 kg) to the ceiling. The ceiling plate included is suitable for both flat and inclined ceilings.



PUC 24 Series

Pop-out wall mounts for an easy video wall installation

PFW 6870 is a customizable video wall framing system for displays weighing up to 72 kg / 160 lbs. with a mounting pattern of 200 x 200 to 600 x 400mm. It features multi-monitor stacking, spring-loaded release, open design, custom spacers, top adjustable mounting brackets and straight scissor-style extension.



PFW 6870

Let the Pro-AV mount advisor help you

The ultimate configuration tool for assembling Vogel's mounting solutions. The Pro-AV mount advisor is an innovative tool that provides professional users with the latest advice on how to best mount their AV-solutions.



MOUNT ADVISOR

Model number	Model name	Mount type	Fitment size	Max weight	Max VESA	Colour	Pole length
Wall mounts							
7330300	PFW 3030	Turn and tilt, 2 pivot points, lockable	32-55"	35 kg	400x400	Black	N/A
7330400	PFW 3040	Turn and tilt, 3 pivot points, lockable	32-55"	35 kg	400x400	Black	N/A
7042000	PFW 4200	Fixed, lockable	10-43"	30 kg	200x200	Black	N/A
7042100	PFW 4210	Tilt, lockable	10-43"	30 kg	200x200	Black	N/A
7045000	PFW 4500	Fixed, lockable	42-55"	50 kg	400x400	Black	N/A
7045100	PFW 4510	Tilt, lockable	42-55"	50 kg	400x400	Black	N/A
7047000	PFW 4700	Fixed, lockable	55-80"	75 kg	600x400	Black	N/A
7047100	PFW 4710	Tilt, lockable	55-65"	75 kg	600x400	Black	N/A
7364000	PFW 6400	Fixed, lockable	46-65"	100 kg	400x400	Black	N/A
7364100	PFW 6410	Tilt, lockable	46-65"	75 kg	400x400	Black	N/A
7368000	PFW 6800	Fixed, lockable	55-80"	100 kg	800x400	Black	N/A
7368100	PFW 6810	Tilt, lockable	55-80"	75 kg	800x400	Black	N/A
7369100	PFW 6910	Fixed and tilt, lockable	80-120"	230 kg	1200x800	Black	N/A
7368500	PFW 6850	Turn and tilt, max 75 cm distance to wall	42-65"	40 kg	630x526	Black	N/A
7368510	PFW 6851	Turn and tilt, max 40 cm distance to wall	42-85"	80 kg	820x650	Black	N/A
7368520	PFW 6852	Turn and tilt, max 66 cm distance to wall	40-98"	136 kg	985x665	Black	N/A
7368550	PFW 6855	Turn, tilt, rotate, max 62 cm distance to wall	65-120"	227 kg	907x600	Black	N/A
7368580	PFW 6858	Fixed, rotate 90°	42-65"	72 kg	870x506	Black	N/A
Floor stands & trolleys							
7951010	F1544B	Floor stand, single pole	< 65"	105 kg	400x400	Black	150 cm
7951020	F1844B	Floor stand, single pole	< 65"	80 kg	400x400	Black	180 cm
7951030	F2044B	Floor stand, single pole	< 65"	60 kg	400x400	Black	200 cm
7953010	T1544B	Trolley, single pole	< 65"	105 kg	400x400	Black	150 cm
7953020	T1844B	Trolley, single pole	< 65"	80 kg	400x400	Black	180 cm
7953030	T2044B	Trolley, single pole	< 65"	60 kg	400x400	Black	200 cm
7951050	FD1584B	Floor stand, double pole	> 65"	160 kg	800x400	Black	150 cm
7951070	FD1884B	Floor stand, double pole	> 65"	160 kg	800x400	Black	180 cm
7951090	FD2084B	Floor stand, double pole	> 65"	120 kg	800x400	Black	200 cm
7953050	TD1584B	Trolley, double pole	> 65"	160 kg	800x400	Black	150 cm
7953070	TD1884B	Trolley, double pole	> 65"	160 kg	800x400	Black	180 cm
7953090	TD2084B	Trolley, double pole	> 65"	150 kg	800x400	Black	200 cm
Ceiling mounts							
7955100	CT240844B	Flat/inclined ceiling, 360° turn, single pole	< 65"	40 kg	400x400	Black	80 cm
7955110	CT241544B	Flat/inclined ceiling, 360° turn, single pole	< 65"	40 kg	400x400	Black	150 cm
7955120	CT242244B	Flat/inclined ceiling, 360° turn, single pole	< 65"	40 kg	400x400	Black	220 cm
7955130	CT243044B	Flat/inclined ceiling, 360° turn, single pole	< 65"	40 kg	400x400	Black	300 cm
7950010	C0844B	Flat ceiling, fixed, single pole	< 65"	80 kg	400x400	Black	80 cm
7950020	C1544B	Flat ceiling, fixed, single pole	< 65"	80 kg	400x400	Black	150 cm
7950030	C3044B	Flat ceiling, fixed, single pole	< 65"	80 kg	400x400	Black	300 cm
7950050	CD1584B	Flat ceiling, fixed, double pole	> 65"	160 kg	800x400	Black	150 cm
7950070	CD3084B	Flat ceiling, fixed, double pole	> 65"	160 kg	800x400	Black	300 cm
Video wall							
7368700	PFW 6870	Pop-out wall mount, landscape	37-65"	72 kg	600x400	Black	N/A
7368750	PFW 6875	Pop-out wall mount, portrait	37-65"	72 kg	500x600	Black	N/A
7368800	PFW 6880	Ultra-slim pop-out wall mount, landscape	37-65"	45.5 kg	600x400	Black	N/A
7368850	PFW 6885	Ultra-slim pop-out wall mount, portrait	37-65"	45.5 kg	400x600	Black	N/A
7922550	FVW2255	2x2 video wall floorstand	46-55"	4x 80 kg	1935x400	Black	200 cm
7922560	TVW2255	2x2 video wall trolley	46-55"	4x 80 kg	1935x400	Black	200 cm
7933550	FVW3355	3x3 video wall floorstand	55"	9x 44 kg	3335x400	Black	270 cm
7933560	TVW3355	3x3 video wall trolley	55"	9x 44 kg	3335x400	Black	270 cm

Peerless-AV consider a “solution” to be more than the product itself. A true solution encompasses how the product is made, how it gets to you and the service you receive. Peerless-AV devote care and attention to every element of their AV solutions in order to fulfil the sum total of your needs.



Model number	Model name	Mount type	Fitment size	Max weight	Max VESA	Colour
LED Samsung						
DS-LEDIF-6x3	DS-LEDIF-6x3	FHD LED Mounting Configuration 6x3	2880 x 1620 x 56.3-66.3mm	162 kg	n/a	Black & silver
DS-LEDIF-8x4	DS-LEDIF-8x4	FHD LED Mounting Configuration 8x4	3840 x 2160 x 56.3-66.3mm	288 kg	n/a	Black & silver
DS-LEDIF-10x5	DS-LEDIF-10x5	FHD LED Mounting Configuration 12x6	4800 x 2700 x 56.3-66.3mm	450 kg	n/a	Black & silver
*Also available in 12x6, 16x8 and 20x20 configurations. Information available on request						
LED Absen						
DS-LEDAZ7-4x4	DS-LEDAZ7-4x4	FHD LED Mounting Configuration 4x4	2439 x 1284 x 57-76mm	140 kg	n/a	Black & silver
DS-LEDAZ7-5x5	DS-LEDAZ7-5x5	FHD LED Mounting Configuration 5x5	3048 x 1627 x 57-76mm	215 kg	n/a	Black & silver
DS-LEDAZ7-6x6	DS-LEDAZ7-6x6	FHD LED Mounting Configuration 6x6	3660 x 1964 x 57-76mm	310 kg	n/a	Black & silver
DS-LEDAZ7-8x8	DS-LEDAZ7-8x8	FHD LED Mounting Configuration 8x8	4878 x 2650 x 57-76mm	550 kg	n/a	Black & silver
*Also available in 12x12, 8x8, 10x10 and 12x12 configurations. Information available on request						
Trolleys and stands						
VCM580	VCM580	Dual screen VC floor-to-wall mount	2x 55-80"	152 kg	800x400	Silver
SR555E	SR555E	Twin screen VC Trolley - Enclosure	2x 40-55"	68 kg	400x400	Black & Silver
SR555M	SR555M	Twin screen VC Trolley - Column	2x 40-55"	68 kg	400x400	Black
SR575E	SR575E	Trolley - Enclosure	32-75"	68 kg	600x400	Black & Silver
SR598	SR598	Large Screen Trolley	55-98"	136 kg	900x600	Black
SR560M	SR560M	Trolley with metal shelf	32-75"	68 kg	600x400	Black
Smartmount						
SF640P	SF640P	Flat-to-Wall Mount	32-50"	68 kg	400x400	Black
SF650P	SF650P	Flat-to-Wall Mount	37-75"	79 kg	749x433	Black
SF680P	SF680P	Flat-to-Wall Mount	60-95"	158 kg	1111x744	Black
SFP680	SFP680	Flat-to-Wall Mount - Portrait	46-90"	158 kg	494x650	Black
ST640P	ST640P	Tilt Wall Mount - from -5 to +15°	32-60"	68 kg	458x408	Black
ST650P	ST650P	Tilt Wall Mount - from -5 to +15°	37-75"	79 kg	750x405	Black
ST680P	ST680P	Tilt Wall Mount - from -5 to +15°	60-95"	158 kg	1119x745	Black
ST680P	ST680P	Tilt Wall Mount - Portrait	46-90"	158 kg	455x650	Black
SA746PU	SA746PU	Articulating - Full Motion + Tilt	32-50"	36 kg	400x400	Black
SA752PU	SA752PU	Articulating - Full Motion + Tilt	37-55"	41 kg	600x400	Black
SA761PU	SA761PU	Articulating - Full Motion + Tilt	39-75"	57 kg	600x400	Black
SA771PU	SA771PU	Articulating - Full Motion + Tilt	46-90"	68 kg	800x400	Black
Indoor Totem Kiosks						
KIPC2540-EUK	KIPC2540-EUK	Curved Portrait kiosk	40"	56 kg	600x400	Black / Silver / Custom
KIPC2542-EUK	KIPC2542-EUK	Curved Portrait kiosk	42"	56 kg	600x400	Black / Silver / Custom
KIPC2543-EUK	KIPC2543-EUK	Curved Portrait kiosk	43"	56 kg	600x400	Black / Silver / Custom
KIPC2546-EUK	KIPC2546-EUK	Curved Portrait kiosk	46"	56 kg	600x400	Black / Silver / Custom
KIPC2547-EUK	KIPC2547-EUK	Curved Portrait kiosk	47"	56 kg	600x400	Black / Silver / Custom
KIPC2548-EUK	KIPC2548-EUK	Curved Portrait kiosk	48"	56 kg	600x400	Black / Silver / Custom
KIPC-2549-EUK	KIPC-2549-EUK	Curved Portrait kiosk	49"	56 kg	600x400	Black / Silver / Custom
KIPC2550-EUK	KIPC2550-EUK	Curved Portrait kiosk	50"	56 kg	600x400	Black / Silver / Custom
KIPC2555-EUK	KIPC2555-EUK	Curved Portrait kiosk	55"	56 kg	600x400	Black / Silver / Custom
KIPC-2565-EUK	KIPC-2565-EUK	Curved Portrait kiosk	65"	68 kg	600x400	Black / Silver / Custom
Videowall						
DS-VW765-LAND	DS-VW765-LAND	Full-service Landscape	40-65"	68 kg	700x400	Black
DS-VW765-LQR	DS-VW765-LQR	Quick release Landscape	46-65"	57 kg	700x400	Black
DS-VW755S	DS-VW755S	Quick Release / Ultra Slim	40-65"	36 kg	400x400	Black
DS-VW755	DS-VW755	Pop-out / Extra adjustment	46-60"	57 kg	400x400	Black
DS-VW755-QR	DS-VW755-QR	Quick Release / Extra adjustment	46-60"	57 kg	400x400	Black
DS-VW795-QR	DS-VW795-QR	Quick Release / Extra Large	65-98"	102 kg	600x600	Black

SEAMLESS by Peerless

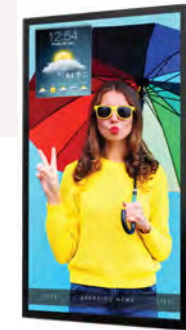
Included in the SEAMLESS Design Consultancy Programme are universal, custom and dedicated DvLED mounting systems, together with a range of tailored support services such as technical training, custom project management and more.



SAMSUNG Abgen

Xtreme High Bright Outdoor Display – NEW 65"

- Operating temperature range -35°C - 60°C
- All weather rated (IP66)
- IK10 rated, impact resistant tempered cover glass
- High Bright Output offering 2500nits of light output
- Optically bonded, anti-reflective cover glass increases perceived contrast rating
- XHB652 includes a Peerless-AV Outdoor Flat Wall Mount to provide a secure installation



XHB652-EUK

Full-Service Quick Release Video Wall Mounts

- No tools required for micro adjustment on each x, y and z axis
- Reusable custom wall spacers eliminate guesswork and on-site calculations
- Easy hang wall plate for a simplified install
- Gentle quick release system for easy serviceability and maintenance



DS-VW775-QR

- Large Format Displays
- High End Displays
- Projection
- Small Format Displays
- Commercial & Consumer TV
- AV Solutions
- Mounts & Accessories

WorksZone Ellipse Collaboration Table

Designed for user comfort, the WorksZone Ellipse Collaboration Table is a fixed or height adjustable collaboration table. With options to sit or stand, the WorksZone Ellipse Collaboration Table allows users to work at their preferred heights whilst engaging collectively.



WZELLIPSE

support modern teaching, training and conferencing practices

Totem AV Stand is a self-contained and versatile digital signage solution that supports integrated AV & IT equipment.



350002

contemporary AV furniture with soft seating

With a choice of either 4 or 6 seat options, the WorksZone Pod caters for small or medium size groups who want to engage collectively.

WorksZone Pod



TeamMate®

Take the meeting with you for easy collaboration

TeamMate VariHite™ Screen Stand is an electrically height adjustable stand for VESA compatible flat screen displays, including the Microsoft Surface Hub™ and SMART interactive displays.



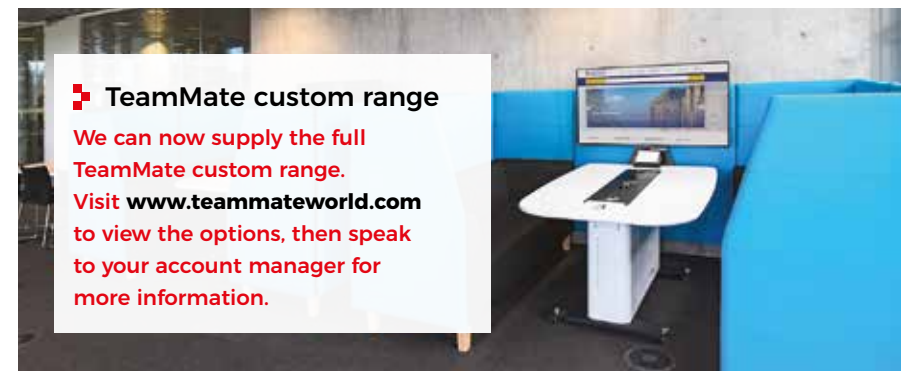
VARIHITESS

Secure media cabinet for teaching and seminar rooms

Low cost and with a small footprint the hub is a fully functioning secure media cabinet that is used against a wall or in the corner of teaching spaces.



HUB2



TeamMate custom range

We can now supply the full TeamMate custom range. Visit www.teammateworld.com to view the options, then speak to your account manager for more information.

Middle Atlantic Products has manufactured exceptional support and protection products to mount integrated AV systems in Residential, Commercial, Broadcast, and Security applications since 1979. At the heart of every installation, you'll find Middle Atlantic Products - what great systems are built on.

Series	Model name	Mount type	Rack space	Usable depth	Max weight	Applications
Floor standing Racks						
Slim 5	5-8	Floor / Multi-bay	8U	508 mm	181 kg	Commercial AV, Residential AV
Slim 5	5-14	Floor / Multi-bay	14U	508 mm	181 kg	Commercial AV, Residential AV
Slim 5	5-14-26	Floor / Multi-bay	14U	660 mm	181 kg	Commercial AV, Residential AV
Slim 5	5-21	Floor / Multi-bay	21U	508 mm	181 kg	Commercial AV, Residential AV
Slim 5	5-21-26	Floor / Multi-bay	21U	660 mm	181 kg	Commercial AV, Residential AV
Slim 5	5-29	Floor / Multi-bay	29U	508 mm	181 kg	Commercial AV, Residential AV
Slim 5	5-29-26	Floor / Multi-bay	29U	660 mm	181 kg	Commercial AV, Residential AV
Slim 5	5-37	Floor / Multi-bay	37U	508 mm	181 kg	Commercial AV, Residential AV
Slim 5	5-37-26	Floor / Multi-bay	37U	660 mm	181 kg	Commercial AV, Residential AV
Slim 5	5-43	Floor / Multi-bay	43U	508 mm	181 kg	Commercial AV, Residential AV
Slim 5	-5-43-26	Floor / Multi-bay	43U	660 mm	181 kg	Commercial AV, Residential AV
BGR	BGR-1927	Floor / Multi-bay	19U	609 mm	181 kg	Commercial AV, Residential AV
BGR	BGR-2527	Floor / Multi-bay	25U	609 mm	1360 kg	Commercial AV, Residential AV
BGR	BGR-4127	Floor / Multi-bay	41U	609 mm	1360 kg	Commercial AV, Residential AV
BGR	BGR-4132	Floor / Multi-bay	41U	736 mm	1360 kg	Commercial AV, Residential AV
BGR	BGR-4527	Floor / Multi-bay	45U	609 mm	1360 kg	Commercial AV, Residential AV
BGR	BGR-4532	Floor / Multi-bay	45U	736 mm	1360 kg	Commercial AV, Residential AV
ERK	ERK-1820	Floor / Multi-bay	18U	469 mm	1133 kg	Commercial AV, Residential AV
ERK	ERK-1825	Floor / Multi-bay	18U	589 mm	1133 kg	Commercial AV, Residential AV
ERK	ERK-2120	Floor / Multi-bay	21U	469 mm	1133 kg	Commercial AV, Residential AV
ERK	ERK-2125	Floor / Multi-bay	21U	589 mm	1133 kg	Commercial AV, Residential AV
ERK	ERK-2720	Floor / Multi-bay	27U	469 mm	1133 kg	Commercial AV, Residential AV
ERK	ERK-2725	Floor / Multi-bay	27U	589 mm	1133 kg	Commercial AV, Residential AV
ERK	ERK-3520	Floor / Multi-bay	35U	469 mm	1133 kg	Commercial AV, Residential AV
ERK	ERK-3525	Floor / Multi-bay	35U	589 mm	1133 kg	Commercial AV, Residential AV
ERK	ERK-4020	Floor / Multi-bay	40U	469 mm	1133 kg	Commercial AV, Residential AV
ERK	ERK-4025	Floor / Multi-bay	40U	589 mm	1133 kg	Commercial AV, Residential AV
ERK	ERK-4420	Floor / Multi-bay	44U	469 mm	1133 kg	Commercial AV, Residential AV
ERK	ERK-4425	Floor / Multi-bay	44U	458 mm	1133 kg	Commercial AV, Residential AV
Essex RCS	IRCS-1824	Floor / Config	18U	508 mm	544 kg	Residential AV
Essex RCS	IRCS-2724	Floor / Config	27U	508 mm	544 kg	Residential AV
Essex RCS	IRCS-3524	Floor / Config	35U	508 mm	544 kg	Residential AV
Essex RCS	IRCS-4224	Floor / Config	42U	508 mm	544 kg	Residential AV

Series	Model name	Mount type	Rack space	Usable depth	Max weight	Applications
Floor standing Racks						
DWR-10-17	DWR-10-17	Horizontal	10U	381 mm	136 kg	Commercial AV, Residential AV, Security
DWR-10-22	DWR-10-22	Horizontal	10U	508 mm	136 kg	Commercial AV, Residential AV, Security
DWR-12-17	DWR-12-17	Horizontal	12U	381 mm	136 kg	Commercial AV, Residential AV, Security
DWR-12-22	DWR-12-22	Horizontal	12U	508 mm	136 kg	Commercial AV, Residential AV, Security
DWR-12-26	DWR-12-26	Horizontal	12U	609 mm	136 kg	Commercial AV, Residential AV, Security
DWR-16-17	DWR-16-17	Horizontal	16U	381 mm	136 kg	Commercial AV, Residential AV, Security
DWR-16-22	DWR-16-22	Horizontal	16U	508 mm	136 kg	Commercial AV, Residential AV, Security
DWR-18-17	DWR-18-17	Horizontal	18U	381 mm	136 kg	Commercial AV, Residential AV, Security
DWR-18-22	DWR-18-22	Horizontal	18U	508 mm	136 kg	Commercial AV, Residential AV, Security
DWR-18-26	DWR-18-26	Horizontal	18U	609 mm	136 kg	Commercial AV, Residential AV, Security
DWR-21-17	DWR-21-17	Horizontal	21U	381 mm	136 kg	Commercial AV, Residential AV, Security
DWR-21-22	DWR-21-22	Horizontal	21U	508 mm	136 kg	Commercial AV, Residential AV, Security
DWR-24-17	DWR-24-17	Horizontal	24U	381 mm	136 kg	Commercial AV, Residential AV, Security
DWR-24-22	DWR-24-22	Horizontal	24U	508 mm	136 kg	Commercial AV, Residential AV, Security
DWR-35-22	DWR-35-22	Horizontal	35U	508 mm	136 kg	Commercial AV, Residential AV, Security
DWR-35-26	DWR-35-26	Horizontal	35U	609 mm	136 kg	Commercial AV, Residential AV, Security



BGR series, wide AV enclosure

Both Forward and Lever Lock™ compatible, the BGR Series provides maximum mounting capacity on and off the rail and a suite of tool-free accessories. This makes installation 5 times faster.



BGR SERIES

DWR series, pivoting wall rack

This pivoting, sectional wall cabinet is ideal for systems in both secured and non-secured areas. Specify a DWR wall cabinet to provide easy rear access while keeping floor areas clear.



DWR SERIES

Middle Atlantic Products has manufactured exceptional support and protection products to mount integrated AV systems in Residential, Commercial, Broadcast, and Security applications since 1979. At the heart of every installation, you'll find Middle Atlantic Products - what great systems are built on.



Series	Model name	Mount type	Rack space	Usable depth	Max weight	Applications
Pull out racks						
SRSR	SRSR-2-12	In Wall & Rotate	12U	482 mm	56 kg	Commercial AV, Residential AV
SRSR	SRSR-2-13	In Wall & Rotate	13U	482 mm	56 kg	Commercial AV, Residential AV
SRSR	SRSR-2-14	In Wall & Rotate	14U	482 mm	56 kg	Commercial AV, Residential AV
SRSR	SRSR-2-16	In Wall & Rotate	16U	482 mm	56 kg	Commercial AV, Residential AV
SRSR	SRSR-2-20	In Wall & Rotate	20U	482 mm	56 kg	Commercial AV, Residential AV
SRSR	SRSR-2-24	In Wall & Rotate	24U	482 mm	56 kg	Commercial AV, Residential AV
SRSR	SRSR-4-12	In Wall & Rotate	12U	482 mm	113 kg	Commercial AV, Residential AV
SRSR	SRSR-4-14	In Wall & Rotate	14U	482 mm	113 kg	Commercial AV, Residential AV
SRSR	SRSR-4-16	In Wall & Rotate	16U	482 mm	113 kg	Commercial AV, Residential AV
SRSR	SRSR-4-19	In Wall & Rotate	19U	482 mm	113 kg	Commercial AV, Residential AV
SRSR	SRSR-4-24	In Wall & Rotate	24U	482 mm	113 kg	Commercial AV, Residential AV
SRSR	SRSR-4-30	In Wall & Rotate	30U	482 mm	113 kg	Commercial AV, Residential AV
AX-SXR	AX-SXR-40	In Wall & Rotate	40U	508 mm	204 kg	Commercial AV, Residential AV
AX-SXR	AX-SXR-43	In Wall & Rotate	30U	508 mm	204 kg	Commercial AV, Residential AV
AXS	AXS-24	In Wall	24U	508 mm	294 kg	Residential AV
AXS	AXS-27	In Wall	27U	508 mm	294 kg	Residential AV
AXS	AXS-37	In Wall	37U	508 mm	294 kg	Residential AV
AXS	AXS-40	In Wall	40U	508 mm	294 kg	Residential AV
AXS	AXS-40-26	In Wall	40U	660 mm	294 kg	Residential AV
AXS	AXS-43	In Wall	43U	508 mm	294 kg	Residential AV
AXS	AXS-43-26	In Wall	43U	660 mm	294 kg	Residential AV
WR	WR-37-32	In Wall & Rotate	24U	660 mm	340 kg	Commercial AV, Security, Broadcast
WR	WR-37-32	In Wall & Rotate	37U	660 mm	340 kg	Commercial AV, Security, Broadcast
WR	WR-37-42	In Wall & Rotate	37U	911 mm	340 kg	Commercial AV, Security, Broadcast
WR	WR-44-32	In Wall & Rotate	44U	660 mm	340 kg	Commercial AV, Security, Broadcast

SRSR series, slide out rotating rail system

Specify an SRSR for easy rear access to equipment connections in millwork, cabinets and flush in-wall installations. Available with a 19" or 23" useable depth, the SRSR system extends and rotates 90° in either direction, making it ideal for smaller systems.



Series	Model name	Mount type	Rack space	Usable depth	Max weight	Applications
Pull out racks						
CFR	CFR-8-16	Horizontal	8U	406 mm	113 kg	Commercial AV, Residential AV
CFR	CFR-8-18	Horizontal	8U	457 mm	113 kg	Commercial AV, Residential AV
CFR	CFR-9-16	Horizontal	9U	406 mm	113 kg	Commercial AV, Residential AV
CFR	CFR-9-18	Horizontal	9U	457 mm	113 kg	Commercial AV, Residential AV
CFR	CFR-10-16	Horizontal	10U	406 mm	113 kg	Commercial AV, Residential AV
CFR	CFR-10-18	Horizontal	10U	457 mm	113 kg	Commercial AV, Residential AV
CFR	CFR-11-16	Horizontal	11U	406 mm	113 kg	Commercial AV, Residential AV
CFR	CFR-11-18	Horizontal	11U	457 mm	113 kg	Commercial AV, Residential AV
CFR	CFR-12-16	Horizontal	12U	406 mm	113 kg	Commercial AV, Residential AV
CFR	CFR-12-18	Horizontal	12U	457 mm	113 kg	Commercial AV, Residential AV
CFR	CFR-13-16	Horizontal	13U	406 mm	113 kg	Commercial AV, Residential AV
CFR	CFR-13-18	Horizontal	13U	457 mm	113 kg	Commercial AV, Residential AV
CFR	CFR-14-16	Horizontal	14U	406 mm	113 kg	Commercial AV, Residential AV
CFR	CFR-14-18	Horizontal	14U	457 mm	113 kg	Commercial AV, Residential AV
CFR	CFR-14-20	Horizontal	14U	584 mm	113 kg	Commercial AV, Residential AV
CFR	CFR-15-16	Horizontal	15U	406 mm	113 kg	Commercial AV, Residential AV
CFR	CFR-15-23	Horizontal	15U	457 mm	113 kg	Commercial AV, Residential AV
CFR	CFR-16-16	Horizontal	16U	406 mm	113 kg	Commercial AV, Residential AV
CFR	CFR-16-18	Horizontal	16U	457 mm	113 kg	Commercial AV, Residential AV
CFR	CFR-16-23	Horizontal	16U	584 mm	113 kg	Commercial AV, Residential AV

Series	Model name	Mount type	Rack space	Usable depth	Max weight	Applications
Under table racks						
UTB	UTB-A2-14	Horizontal / Vert	2U	355 mm	15 kg	Commercial AV
UTB	UTB-HR-A2-14	Horizontal / Vert	2U	355 mm	15 kg	Commercial AV

Series	Model name	Mount type	Rack space	Usable depth	Max weight	Applications
Furniture racks						
MFR	MFR-12Z7	Horizontal	12U	585 mm	113 kg	Commercial AV, Residential AV
MFR	MFR-16Z7	Horizontal	16U	585 mm	113 kg	Commercial AV, Residential AV
MFR	MFR-20Z7	Horizontal	20U	585 mm	113 kg	Commercial AV, Residential AV
RFR	RFR-16Z8	Horizontal	16U	585 mm	158 kg	Commercial AV, Residential AV
RFR	RFR-20Z8	Horizontal	20U	585 mm	158 kg	Commercial AV, Residential AV
RFR	RFR-24Z8	Horizontal	24U	585 mm	158 kg	Commercial AV, Residential AV

Legrand | AV is a business of Legrand focused on providing innovative foundational AV product and service solutions that make it easy for professional customers to create amazing AV experiences for end users worldwide. In our portfolio you can find LeGrand brands: Chief, Vaddio, Projecta and Middle Atlantic.



Large Format Displays

High End Displays

Projection

Small Format Displays

Commercial & Consumer TV

AV Solutions

Mounts & Accessories

Cables & accessories



Digitalinx adapter ring FFDL-AR



This Digitalinx adapter ring includes:

- 1 Inter-series adaptor micro HDMI "D" male to HDMI "A" female (ARMDHD)
- 1 Inter-series adaptor mini HDMI "C" male to HDMI "A" female (ARMCHD)
- 1 Inter-series adaptor mini DisplayPort male to HDMI female (ARMDPHD)
- 1 Inter-series adaptor full sized DisplayPort male to HDMI female (ARDPHD)
- 1 Inter-series adaptor for DVI Digital male to HDMI female (ARDVHD)
- 1 Base security clamp, cable and hardware for DL-AR system (DL-CL)

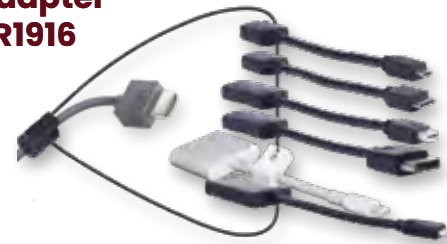
Digitalinx adapter ring FFDL-AR2



This Digitalinx adapter ring includes:

- 1 Inter-series adaptor micro HDMI "D" male to HDMI "A" female (ARMDHD)
- 1 Inter-series adaptor mini HDMI "C" male to HDMI "A" female (ARMCHD)
- 1 Inter-series adaptor mini DisplayPort male to HDMI female (ARMDPHD)
- 1 Inter-series adaptor full sized DisplayPort male to HDMI female (ARDPHD)
- 1 Base security clamp, cable and hardware for DL-AR system (DL-CL)

Digitalinx adapter ring FFDL-AR1916



This Digitalinx adapter ring includes:

- 1 adapter cable DisplayPort male to HDMI female (AR-DPM-HDF)
- 1 adapter cable mini-DisplayPort male to HDMI female (AR-MDPM-HDF)
- 1 adapter cable micro-HDMI "D" male to HDMI female (AR-MDHM-HDF)
- 1 adapter cable mini-HDMI "C" male to HDMI female (AR-MCHM-HDF)
- 1 Apple certified adapter lightning (M) to HDMI (F) and lightning (F) to power device (MD826AM/A)
- 1 adapter cable USB "C" male to HDMI female (AR-UCM-HDF)
- 1 security clamp to attach Apple adapters to DL-AR system (DL-AP)
- 1 base security clamp, cable and hardware for DL-AR system (DL-CL)

BYOD connection hub

The Digitalinx BYOD-HUB-UT is a compact A/V switcher and scaler that features a variety of integrated input connection leads. They are compatible with devices such as mobile phones and tablets, allowing a dependable wired connection to display or TV monitor for presentation purposes.

FFBYODHUBUT

Output resolution can be set to 4k or 1080p

Auto switching to last connected device



Under table mount included

HDCP Compliant

Premium high speed HDMI cable



- Full 18 Gig 4K@60Hz and HDR certified by HDMI ATC
- Supports ethernet, ARC, CEC and all HDMI audio formats
- NEC CM, CEC CMG FT4, RoHS/REACH compliant
- Full traceable HDMI premium serialized
- All 3, 6, 10, 15, 20 and 24 feet lengths rated for 18.0 Gbps)

Code	Length	Colour
FFHDPMM03F	3ft	Black
FFHDPMM06F	6ft	Black
FFHDPMM10F	10ft	Black
FFHDPMM15F	15ft	Black
FFHDPMM20F	20ft	Black

The BYOD-HUB-UT includes:

- 1 lightning (l) USB-C
- 1 mini DisplayPort
- 1 DisplayPort
- 1 HDMI type-A
- 1 HDMI type-D

The BYOD-HUB-UT features an HDMI output with a built in 4K video scaler that can be set to either 4K or 1080p.

1.4m (4 1/2) cables allow for under table mounting, passing through cubbies, table grommets, etc.

Projector Screens

Logrand brands including the established projection screen brands like Projecta. Their proprietary surfaces are designed for each application resulting in expert clarity, rich contrast and vivid colour.



Manufacturer Model No.	Description	Screen Type	Aspect Ratio	Tensioned/ None Tensioned	Surface (suitable for 4K)	Screen viewing size (WxH)
Projection						
10103968	Projecta Elpro Concept	Wall/Ceiling	16:10	Tensioned	HD Progressive 1.1	290x181 cm
10104382	Projecta Elpro Concept	Wall/Ceiling	16:10	Tensioned	HD Progressive 1.1	350x218 cm
10104710	Projecta Tensioned Descender Pro	Ceiling Recessed	16:10	Tensioned	HD Progressive 1.1	290x181 cm
10104713	Projecta Tensioned Descender Pro	Ceiling Recessed	16:10	Tensioned	HD Progressive 1.1	350x219 cm
10102246	Projecta Extensa	Wall/Ceiling	16:10	Tensioned	HD Progressive 1.1	490x306 cm
10102248	Projecta Extensa	Wall/Ceiling	16:10	Tensioned	HD Progressive 1.1	590x369 cm



Large Format Displays

High End Displays

Projection

Small Format Displays

Commercial & Consumer TV

AV Solutions

Mounts & Accessories



+31 (0) 180 745 888 | SALES@VANDOMBURG.NU | WWW.VANDOMBURG.NU



Terms and Conditions: prices are correct at time of online publishing, please confirm at time of ordering. Prices are trade and exclusive VAT and carriage charges. All offers while stock lasts. All transactions are in accordance with our full terms and conditions, a copy available upon request. All trademarks are the property of their respective manufacturers. E&EO. Copyright Van Domburg Partners.